

WE BUILD THE CHANGE

**SEDEMI**

Customized Solutions for  
Infrastructure Projects



## We are Living in Times of Steel

We take advantage of steel's properties to  
build more modern, durable and  
environmentally sustainable projects.



Experts that deliver  
outstanding  
quality service

Our specialized units offer  
products and services with  
quality above the standard.



## Our DNA

We are builders of customized solutions for infrastructure projects with superior service and focused on building value for our stakeholders.



# Our Corporate Values

Focus on Solution



Credibility



Tenacity



Innovation





## Solutions that meet your imagination

Sedemi is an organization inspired by the potential of Ecuador and the world, with more than 45 years of history, its leadership and experience have allowed the construction of the most iconic and visionary projects in the country and the region, thus becoming synonym of development.

**When you trust your project to Sedemi, you can be certain it is in the best hands.**





45 YEARS

of Experience

+5000

Executed Projects

Industrial Plant

90.000

Square Meters

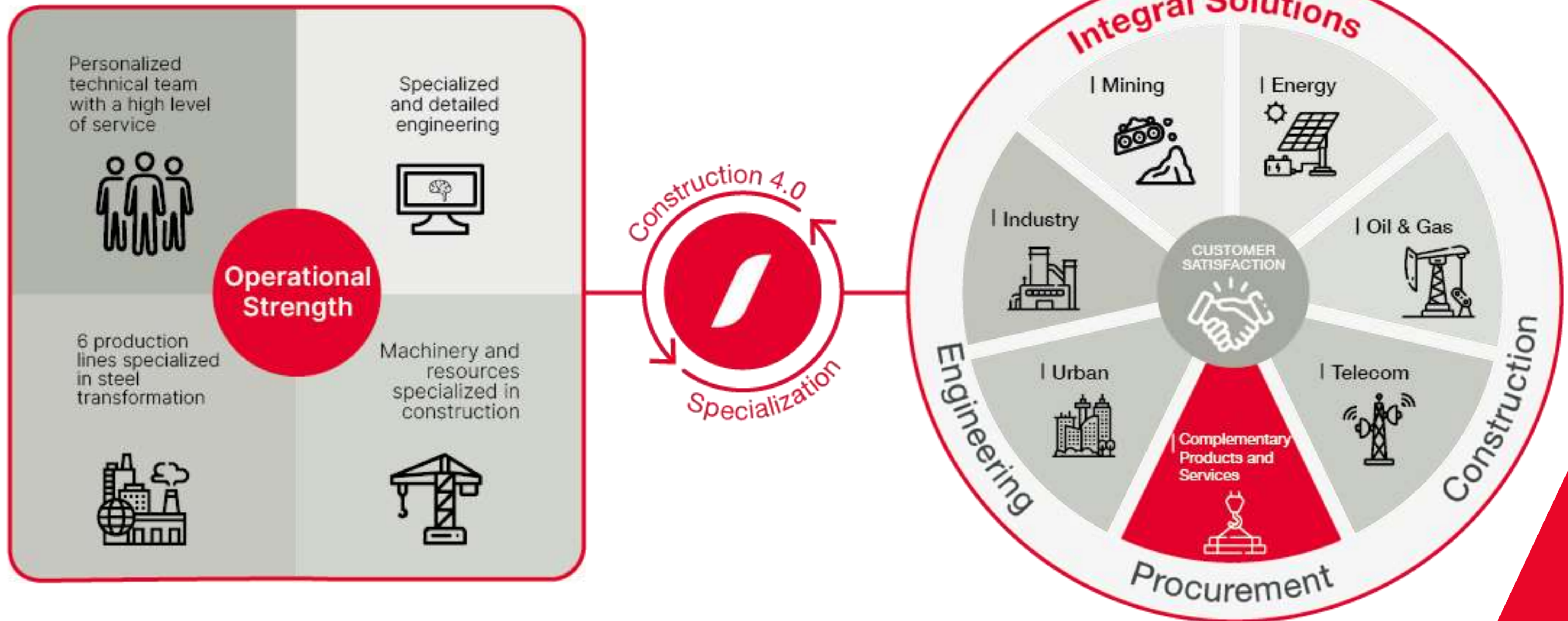
Production Capacity

1.200

Ton/Month



- Business Model



Customized solutions for infrastructure projects.



**SEDEMI**

Integral Solutions

**SEDEMI**  
| Urban

**SEDEMI**  
| Industry

**SEDEMI**  
| Mining

**SEDEMI**  
| Energy

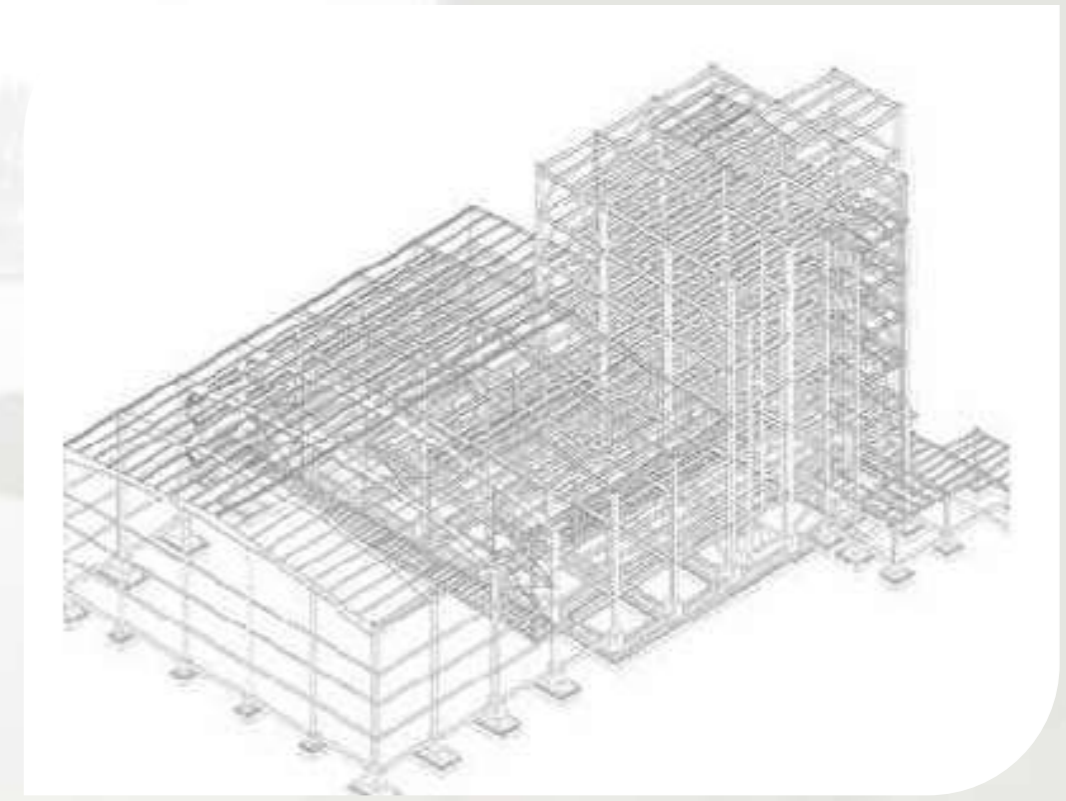
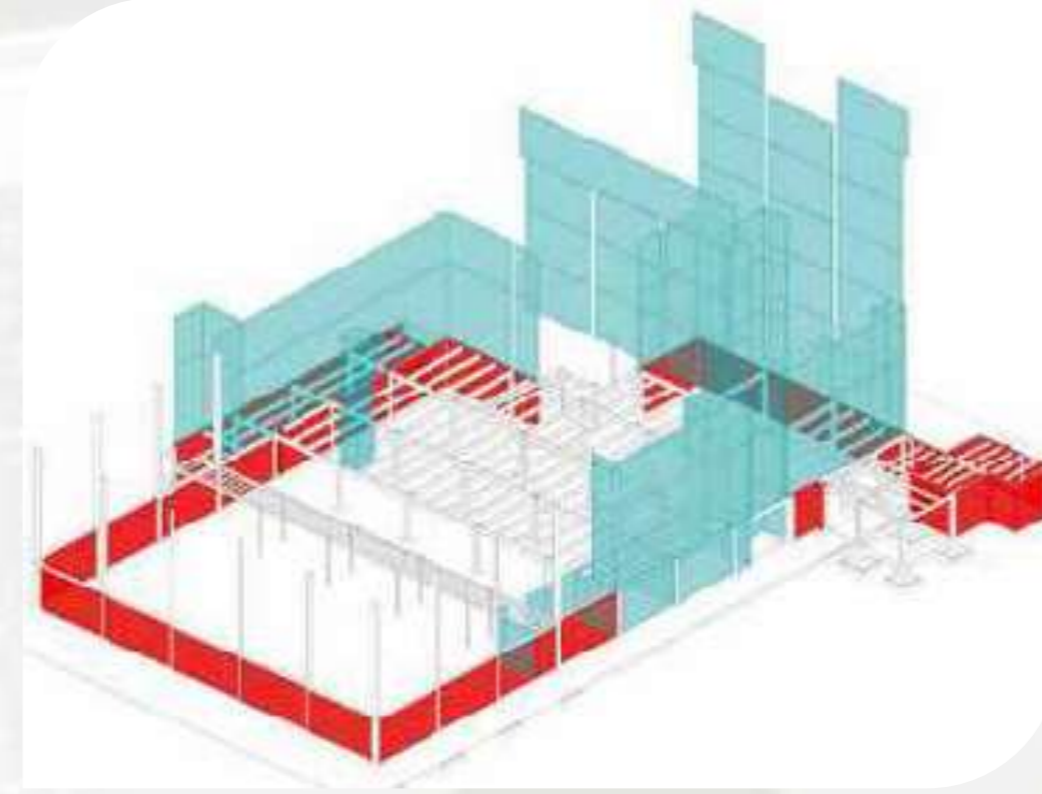
**SEDEMI**  
| Oil & Gas

**SEDEMI**  
| Telecom



- **Construction 4.0**

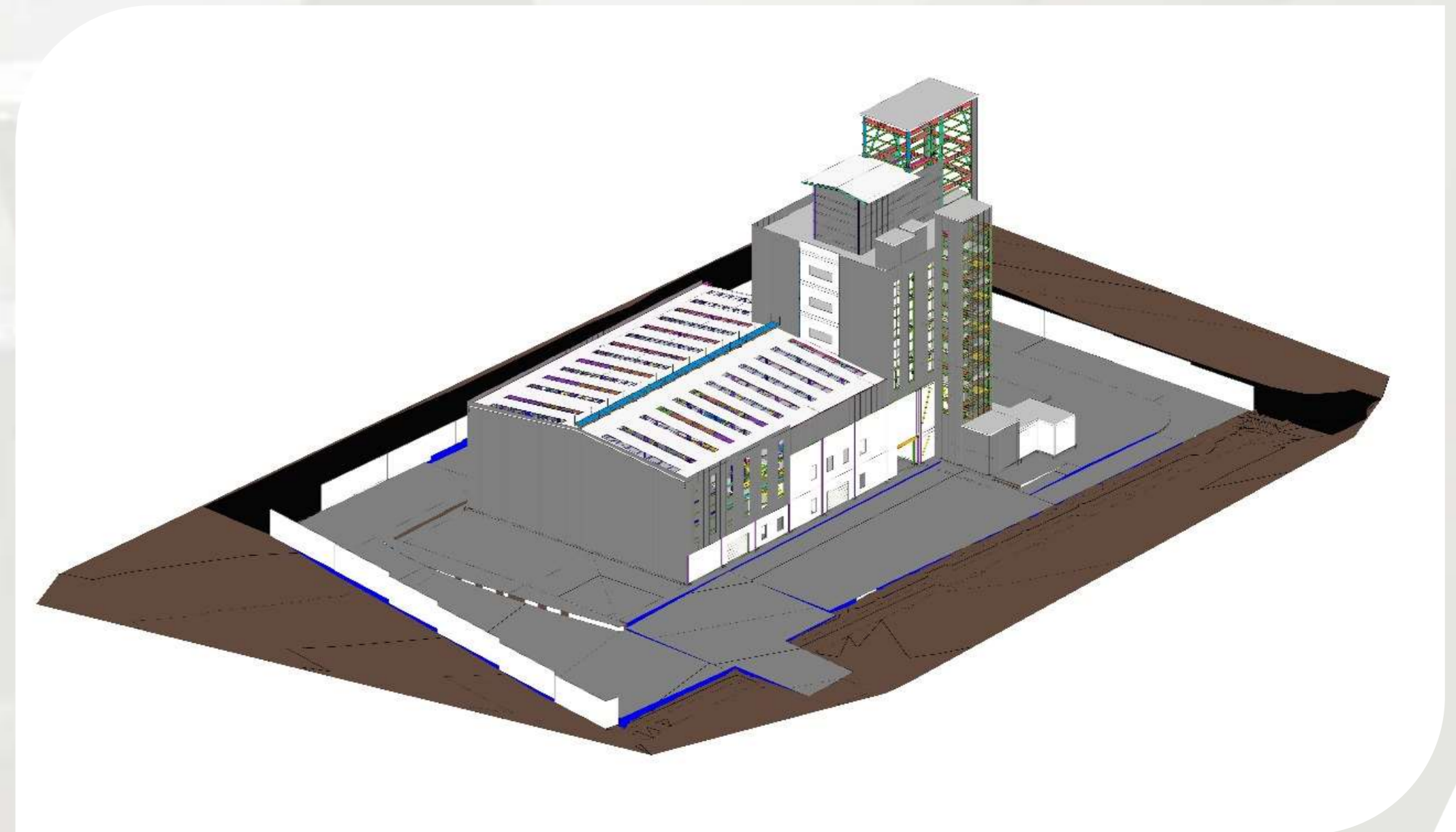
We work along our clients with integral solutions, based in Construction 4.0 with BIM (Building Information Modeling) methodology and industrialized construction. We are present since the first outline of your project until its presentation to the whole world.



- **Expert Team**

MORE THAN  
**50**

- Architects
- Civil Engineers
- Electric Engineers
- Mechanical Engineers
- Chemical Engineers
- Process Engineers





- **Industrialized Manufacturing**

We have an industrial plant equipped with state-of-the-art machinery that works through Computerized Numerical Control (CNC). It allows us to offer integral solutions with quality above the standard.





## Certifications:

To guarantee our value proposition, we have international certifications that endorse our processes and allow us to offer superior quality in our products and services

- ISO 9001
- ASME
- INEN
- UL
- NEMA VE-1-2009 STANDARD









# Together we build the industry of tomorrow.

Industries require more experience and precision every day. In this context, we have established ourselves as the strategic partner for the integral construction of infrastructure in the manufacturing, logistics, food, agro-industrial, lumber, cement and mining sectors.





We are the strategic partner that  
the future demands.

We guarantee the efficiency of projects by creating  
integral solutions with value engineering in conceptual  
design, supply management, industrialized  
prefabrication, construction and commissioning.

Our good practices are based on digitized  
construction (BIM) and industrialized manufacturing.



HIGHLIGHTS:

**+200**

Successfully Executed Projects

**+300.000m<sup>2</sup>**

Industrial Construction Area

**+20.000TON**

Of Steel in Construction

**+15.000**

Job Positions



## OUR SOLUTIONS

- **Integral Construction**

Engineering, Procurement and Construction

- **Metallic Manufacturing**

Engineering, Manufacturing and Assembly

- **Value Engineering**

Advice and Optimization of Designs

- **Products**

Industrial plants, distribution centers, processing plants, large diameter piping, storage tanks, mechanical assembly of equipment and machinery, industrial warehouses, machinery and equipment structure, powerhouses, industrial buildings, hoppers, silos, facilities and miner camps.



**SEDEMI**

FEATURED  
PROJECTS



## ● NOVOPAN Plant Expansion

Client: Novopan  
Location: Pichincha

**Project Scope:** In the three phases, we developed detailed engineering, supply, manufacturing and assembly of metal structure for equipment support and boiler elements.





# ● CORPORACIÓN SUPERIOR Logistics Center - Guayas

Client: Grupo Corporativo Superior  
Location: Guayaquil

**Project Scope:** We built the integral project of a 10,000 m2 logistics center in the coast region. It includes foundations, metal structure, roofs, coatings, industrial floors, maneuvering yards and complementary engineering. In addition, we performed the construction of an administrative building of 4000 m2.





# ● UMCO ECUADOR Industrial Plant and Logistics Center

Client: UMCO Ecuador

Location: Pichincha - Machachi

**Project Scope:** Integral construction that includes architectural design, preliminary works, structures in civil works, floors, maneuvering yard and subfloors, design and structural engineering (Foundations - Metallic Structure), detailing, manufacture and assembly of metallic structure and roofing.

Construction area 10,000 m<sup>2</sup>





# ● LA PROVENZANA BRANDS ECUADOR Logistics Center

Client: Provenzana Brands Ecuador  
Location: Pichincha - Pifo

**Project Scope:** Integral construction that includes architectural design, preliminary works, structures in civil works, floors, maneuvering yard and subfloors, design and structural engineering (Foundations - Metallic Structure), detailing, manufacture and assembly of metallic structure and roofing. Construction area 10,000 m2.





- FORKYS I and II LA FABRIL – Manabí  
Liquid Detergent Plant

Client: La Fabril  
Location: Manabí - Manta

**Project Scope:** Project that includes detailed engineering and complementary engineering for the construction of roads, hydro-sanitary installations, foundations, metallic structure, roofs, enclosures, lining and finishes of Warehouses I, II, III and auxiliary buildings.





# ● ALOAG PARK Logistics Center

Client: Mafer-Real Estate del ecuador S.A..

Location: Aloag

Integral construction that includes all civil works, reinforced concrete-rainwater drains on roads and grade improvement, engineering, manufacturing and assembly of metal structures, roofs and covering of metal walls.



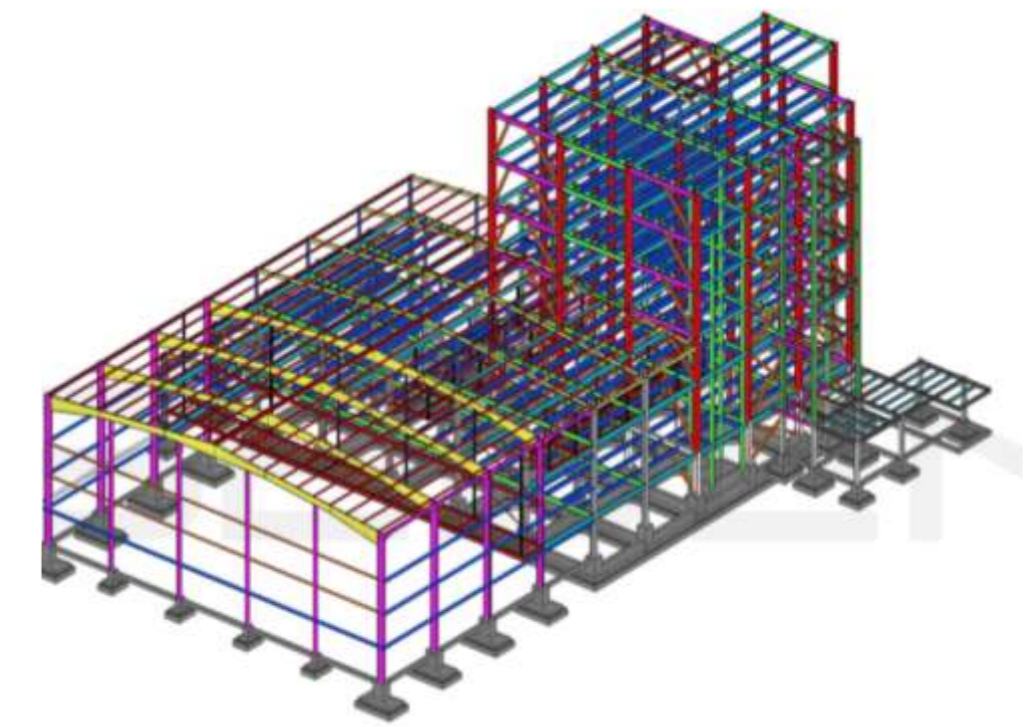
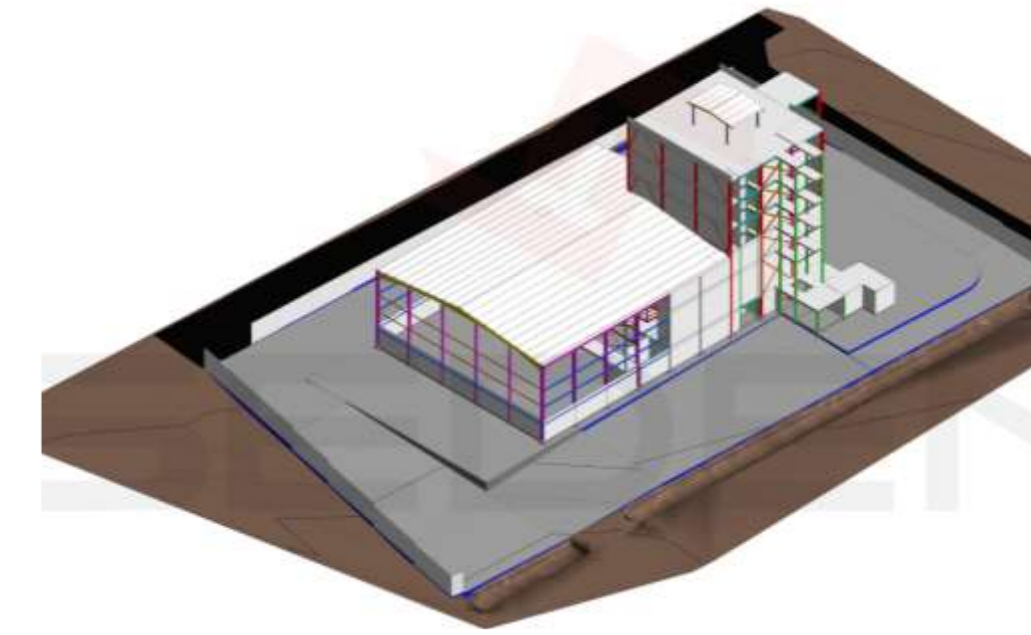


## ● LA FABRIL Powder Detergent Plant - Manabí

Client: La Fabril SA.

Location: Manabí

**Project Scope:** For our client La Fabril we generated earthworks, engineering and structural construction of the process building and industrial packaging warehouse, as well as the construction of the maneuvering yard for the logistics plant.





## ● FV ÁREA ANDINA Industrial Plant Expansion

Client: FV Franz Viegener.

Location: Rumiñahui

**Project Scope:** We built 10350 m2 of industrial area equipped with all the services. Integral project for the new sanitary parts plant, molding and plastering plant, maintenance warehouse and administrative building.

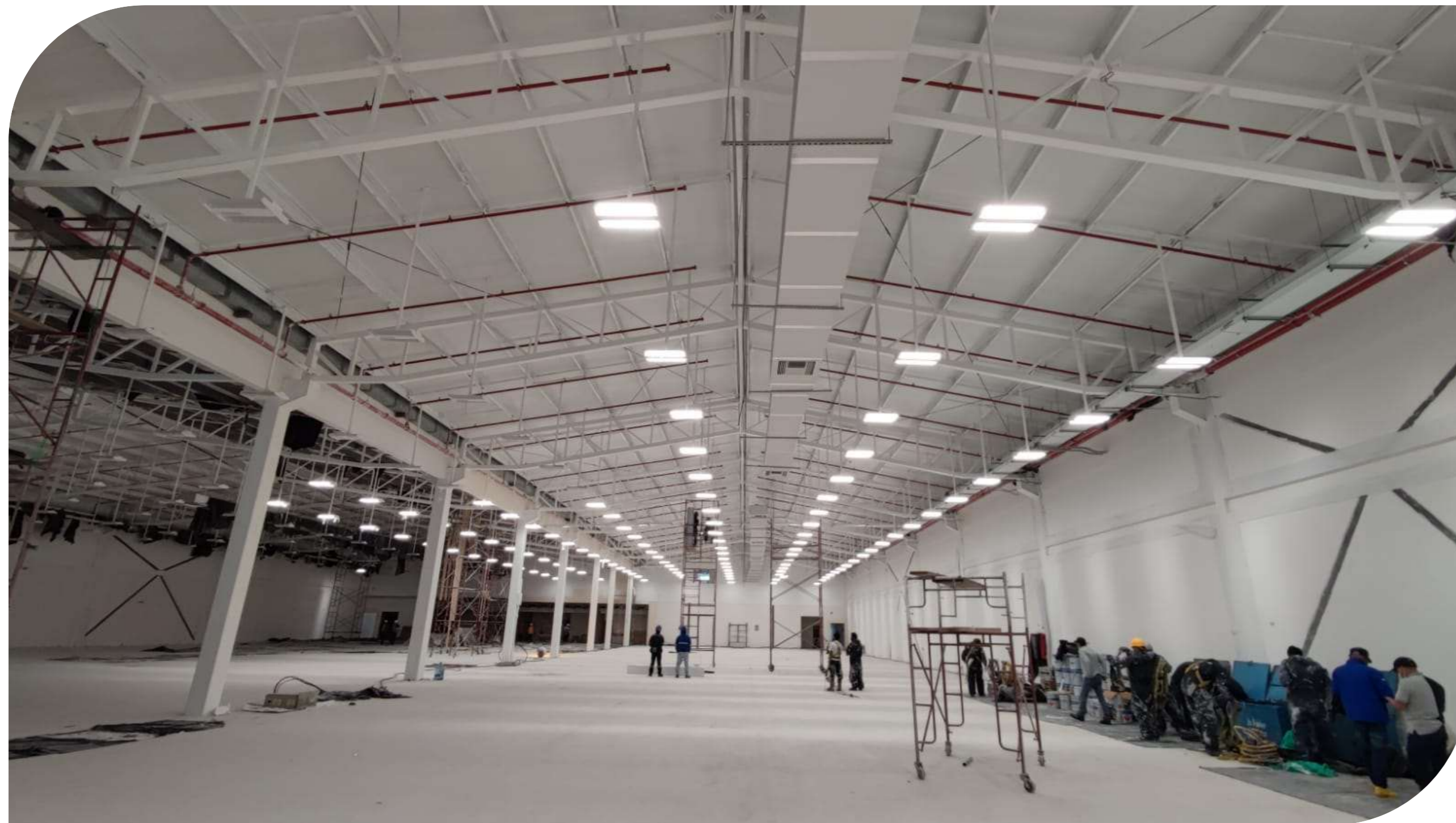




# ● MITAD DEL MUNDO Hipermarket

**Client:** Inmobiliaria Meridional S.A.  
**Location:** Quito – Mitad del Mundo

**Project Scope:** Integral project that includes earthworks, civil works, engineering, manufacturing and assembly of metal structures, interface management at all stages of the project.





## ● SPLENDOR Industrial Plant

Client: Splendor

Location: Cotopaxi - La Mana

**Project Scope:** Engineering, manufacturing, painting and assembly of the metal structure. In addition, the assembly of the entire roof of the storage warehouse and the production plant.





## ● LA FABRIL Expansion of Boiler Vincke Biomass Plant

Client: La Fabril S.A..

Location: Manta

**Project Scope:** Civil works, engineering, supply, manufacturing and assembly of the metallic, electromechanics and electronic structure of a Vincke boiler. Also, peripheral equipment necessary for its functioning and operation and transport to the main steam distribution system of Fabril S.A.





# ● BOTROSA Biomass Plant

Client: Endesa Botrosa  
Location: Puerto Quito

**Project Scope:** Integral project that includes the supply, manufacture and assembly of 350 TON of metal structure for the Vincke Biomass boiler.







**SEDEMI**

**EXPERIENCE**



## Plants and Industrial Buildings:



● CHAIDE & CHAIDE Construction of the Industrial Plant.



● TENARIS Construction of the Industrial Plant



● GENERAL MOTORS Construction of the Industrial Plant.



● NILOTEX Construction of the Production Plant.



● UMCO ECUADOR Construction of the Industrial Plant and Logistics Center.



● PASCUALES CUENCA Polyduct



## Plants and Industrial Buildings:



● JARAMIJÓ Thermal Power Plant.



● SPLENDOR Industrial Plant.

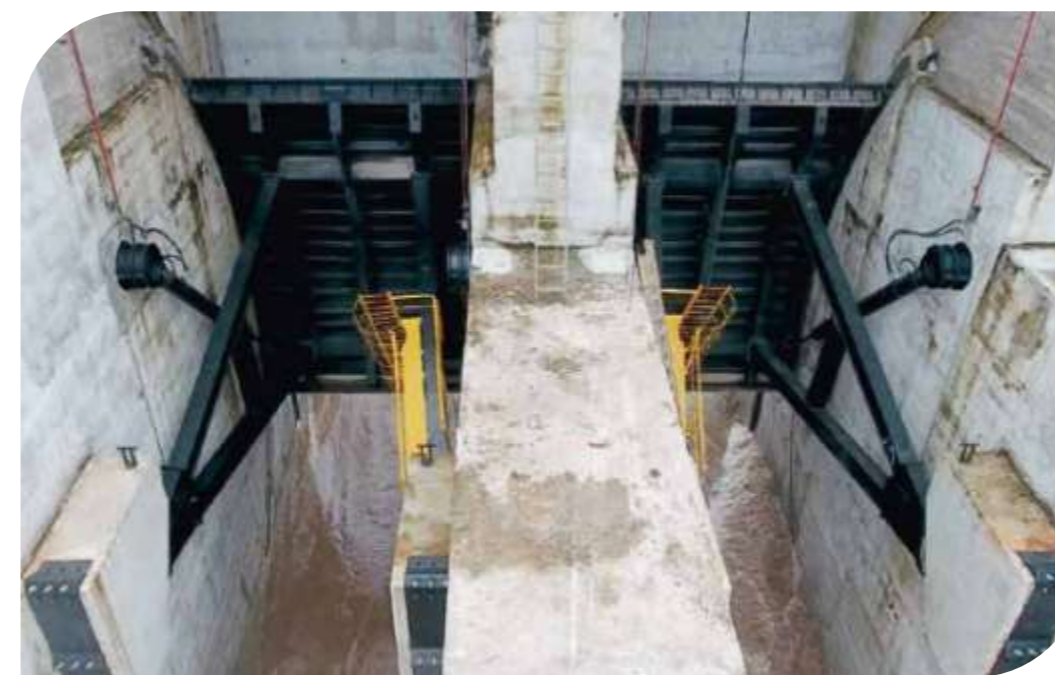


● FAE SALINAS Construction of the Aircraft Shelter

## Hydroelectric Power Plants and Hydromechanical Elements



● MANDURIACU Hydroelectric Power Plant.



● HIDROALTO Radial Gates



● TOACHI PILATÓN Pipe and Splitter of the Hydroelectric Power Plant.



## CONTACT INFORMATION

### ECUADOR

Quito  
Vía Sangolquí - Amaguaña Km 4.5  
Lotización  
El Carmen. Lote # 4.

PHONE: (593 2) 2093 992  
MOBILE: (593 9) 9966 4501  
(593 9) 9944 5358  
(593 9) 9945 1531

### Guayaquil

Kennedy Norte, Miguel H. Alcívar y  
Eleodoro Arboleda, Edificio Plaza  
Center Piso 8, Oficina 807.

MOBILE: (593 9) 8029 8379  
(593 9) 9711 1904

### PERÚ

Av. Juan de Arona, Edificio  
JDA 700, piso 2, oficina 125,  
San Isidro, Lima.

MOBILE: (51) 93978 3682

 [info@sedemi.com](mailto:info@sedemi.com)

# SEDEMI