

WE BUILD THE CHANGE

SEDEMI

Customized Solutions for
Infrastructure Projects

We are Living in Times of Steel

We take advantage of steel's properties to build more modern, durable and environmentally sustainable projects.



Experts that deliver outstanding quality service

Our specialized units offer products and services with quality above the standard.

SEDEMI

Our DNA

We are builders of customized solutions for infrastructure projects with superior service and focused on building value for our stakeholders.

Solutions that meet your imagination

Sedemi is an organization inspired by the potential of Ecuador and the world, with more than 45 years of history, its leadership and experience have allowed the construction of the most iconic and visionary projects in the country and the region, thus becoming synonym of development.

When you trust your project to Sedemi, you can be certain it is in the best hands

Our Corporate Values

Focus on Solution



Credibility



Tenacity



Innovation



45 YEARS

of Experience

+5.000

Executed Projects

Industrial Plant

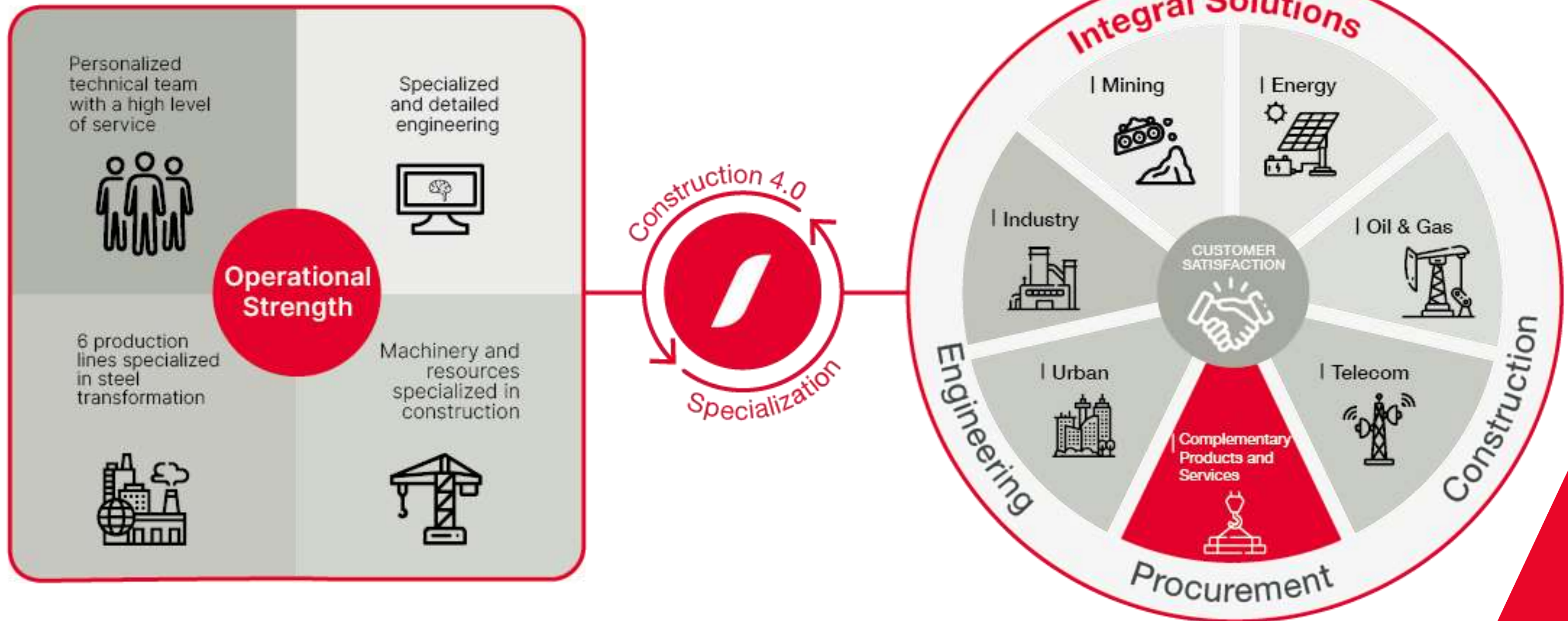
90.000

Square Meters

Production Capacity

1.200
Ton/Month

- Business Model



Customized solutions for infrastructure projects.

SEDEMI

Integral Solutions

SEDEMI
| Urban

SEDEMI
| Industry

SEDEMI
| Mining

SEDEMI
| Energy

SEDEMI
| Oil & Gas

SEDEMI
| Telecom

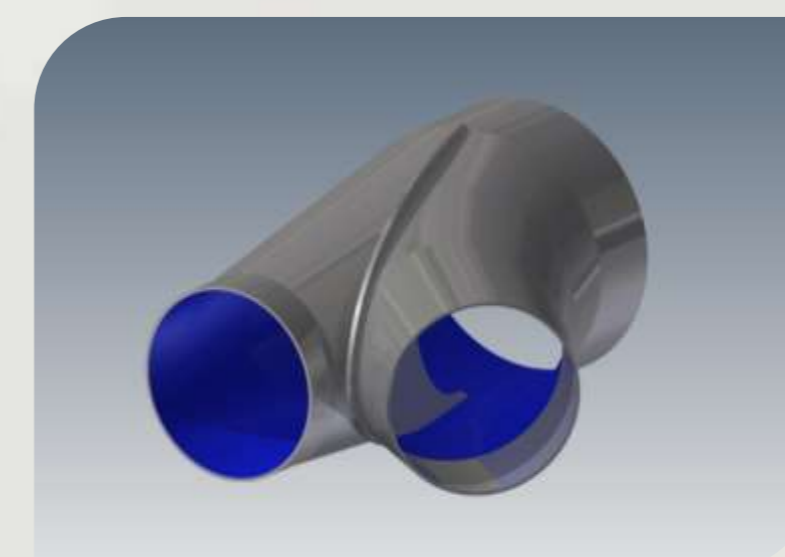
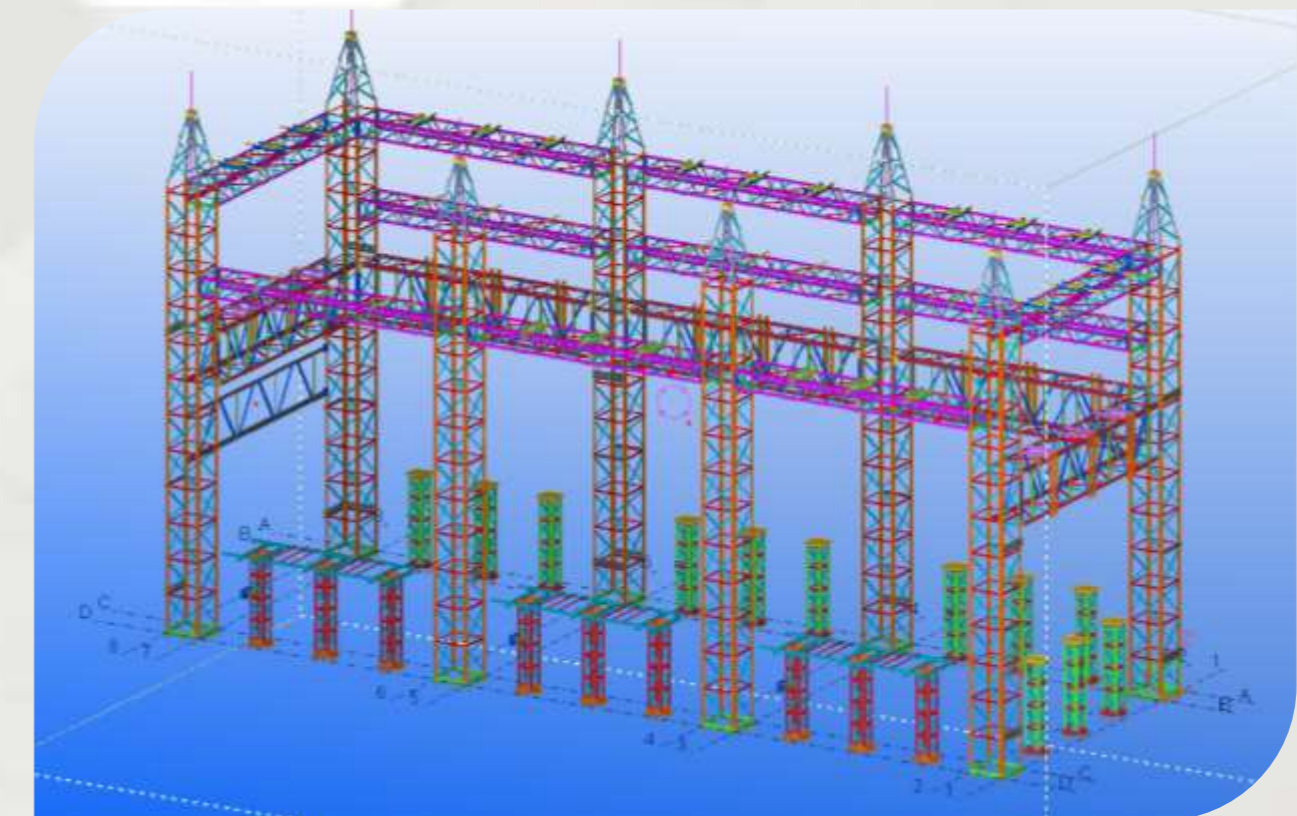
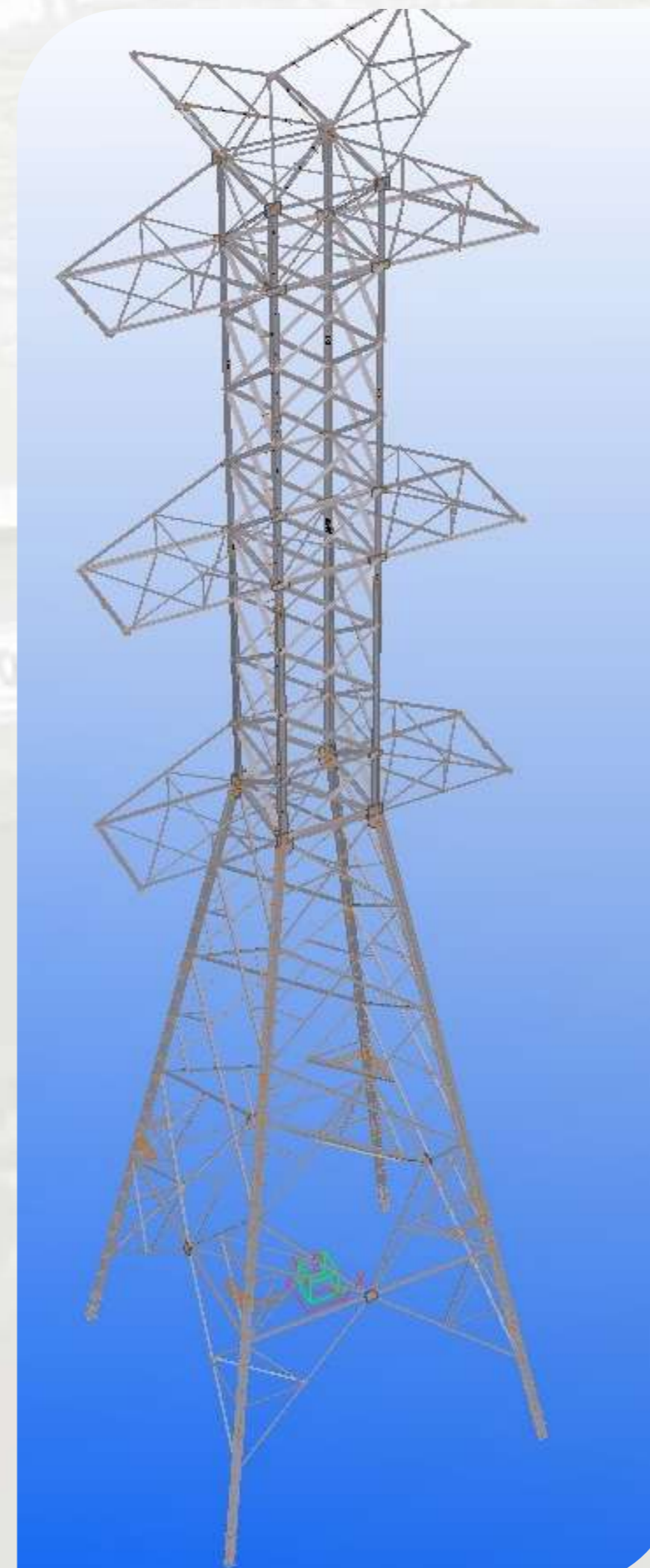
- **Construction 4.0**

We work along our clients with integral solutions, based in Construction 4.0 with BIM (Building Information Modeling) methodology and industrialized construction. We are present since the first outline of your project until its presentation to the whole world.

- **Expert Team**

MORE THAN
50

- Architects
- Civil Engineers
- Electric Engineers
- Mechanical Engineers
- Chemical Engineers
- Process Engineers



- **Industrialized Manufacturing**

We have an industrial plant equipped with state-of-the-art machinery that works through Computerized Numerical Control (CNC). It allows us to offer integral solutions with quality above the standard.



Certifications:

To guarantee our value proposition, we have international certifications that endorse our processes and allow us to offer superior quality in our products and services

- ISO 9001
- ASME
- INEN
- UL
- NEMA VE-1-2009 STANDARD



SEDEMI

| Energy



We transform and transport sustainable energy for the world.



As a result of its long history and dedication to service, Sedemi Energy has established itself as the most reliable and comprehensive strategic partner for power generation, transmission and distribution projects.

Our solutions are characterized by their excellence and versatility in design, manufacturing, construction, commissioning and maintenance for electrical and renewable energies infrastructure



We believe in the force
of nature to generate
progress

We have connected a riverbed with a turbine and one
substation with another, through the highest
mountains and the widest rivers; combining our
expertise in design with production and construction
capabilities

HIGHLIGHTS

+40 years

Experience in the Electric Sector.

1330Km

Laying of Transmission Lines

11 Hydroelectric
Generation
Plants

Supply, Manufacture and Assembly of
Hydromechanical Equipment

834MVA

OF POWER

Transformers Installed at High Voltage.

16.508Ton

Manufacture and Supply of Galvanized
Metallic Structures for Lines and Substations

OUR SOLUTIONS

● Transmission and Electrical Systems

ENGINEERING Basic and detailed engineering for medium, high and extra high voltage transmission lines and substations.

SUPPLIES

Galvanized structures (towers, poles, equipment supports, miscellaneous).

Primary and secondary equipment.

Conductors, insulators and fittings.

CONSTRUCTION

Civil engineering, electromechanical assembly and commissioning.

REPLACEMENT OF COLLAPSED LINES

MAINTENANCE AND MODERNIZATION

CABLE CAR SYSTEMS

● Renewable Energies

Sedemi contributes to the clean energy revolution: hydroelectric, photovoltaic and wind power.

Hydromechanical Components

(large diameter pipes, elbow couplings, splitters, pressure vessels, atmospheric tanks, gates, powerhouses).

Solar panel supports

Towers for wind turbines

● Electromechanical Installations

Sedemi acts as a integral installation contractor, ranging from design to commissioning.

Electricity.

Management, security and public address systems.

Telecommunications.

Fire protection.

● Electric and Electrical Infrastructure

Installation of Automation Systems

Instrumentation

Home automation

Energy efficiency

The text "FEATURED PROJECTS" in a white, sans-serif font, centered within a large red diagonal shape that cuts across the right side of the image.

● National Interconnected System EAT 500kV Ecuador

Client: CELEC EP

Location: Ecuador

Project Scope: We contribute to the transmission of energy throughout an entire country by means of our constructions. San Rafael section A7 Transmission Line – El Inga 500 kV (civil work, erection of towers, laying of conductors), San Rafael Electrical Substation 500/230kV, A9 Tisaleo Transmission Line – Chorrillos 500 kV (section G67 – G177: civil works, tower assembly, laying of conductors) – Tisaleo Electrical Substation 500/230kV.



- Construction of Inga – Pomasqui 230kV and 138kV Substations

Client: Celec EP
Location: Ecuador

Project Scope: We contribute to the energy development of the country. Integral Project: supply of minor equipment, materials, construction of civil works, assembly, start-up of El Inga – Pomasqui 230kV and 138kV substations.



● Isabela Island Hybrid System- Galápagos

Client: Siemens.

Location: Galápagos

Project Scope: We look towards a sustainable future thanks to renewable energies. Construction of the Photovoltaic Plant and Dual Thermal Power Plant and energy storage system with 3.6 GWh/year. It benefits 2,500 inhabitants of the urban and rural areas of Isabela Island – Galapagos.



• Hydroelectric Power Plants Ecuador

Hidro Tambo, Hidro Victoria, Hidrotoapi (Toachi Pilatón) Coca codo , Hidro Alto, Hidro Isimanchi, Central Hidroeléctrica los Chillos, Hidro Sierra (Rio verde chico), Manduriacu, Hidro Normandía, Pucará

Client: CELEC EP.

Location: Ecuador

Project Scope: We put in practice our knowledge and experience in the generation of hydroelectrical power through engineering, manufacturing and assembly of hydromechanical elements and large-diameter piping for important hydroelectric plants in the country.



- **Grupo Superior Building
Electrical and Electronic Infrastructure**

Client: Grupo Superior.

Location: Quito

Project Scope: We foster the progress of our clients. Supply management, construction, testing and commissioning of the electrical and electronic installations of Corporación Superior headquarters building.



• UCEM – Cement Grinding System

Client: UCEM

Location: Riobamba

Project Scope:

- Development, installation of ducts and trays for the laying of electrical and control cables.
- Design and installation of pumping systems for water and fuel.
- Installation and commissioning of electrical and control systems for industrial equipment.



- **TOACHI PILATON Hydroelectric Project**
Assembly of high voltage cables 230 kV.

Client: TYAZHMASH

Location: Pichincha - Santo Domingo de losTsáchilas

Project Scope:

We made the laying of 230 kV high voltage cables from the powerhouse to the Alluriquín Substation, which covered a distance of 700 m. Our team has the experience and tenacity to work in highly complex places.



Load test bank
Electric power towers





SEDEMI

EXPERIENCE

Electrical Transmission and Transformation Systems:



● San Rafael 500 kV and 230 kV Substation.



● San Gregorio 230 kV and 69 kV Substation.



● San Rafael Transmission Line - El Inga 500kV Substation



● Milagro - Las Esclusas 230kV Transmission Line.



● Cruce del Río Napo 69kV Transmission Line.



● Mazar- Shoray 220KV Transmission Line.

Renewable Energies



● ISABELA ISLAND Hybrid System



● LA FABRIL Biomass Plant Construction



● BOTROSA Biomass Plant Construction

Hydromechanical Elements



● HYDROELECTRIC PLANT SAN RAFAEL Pipeline



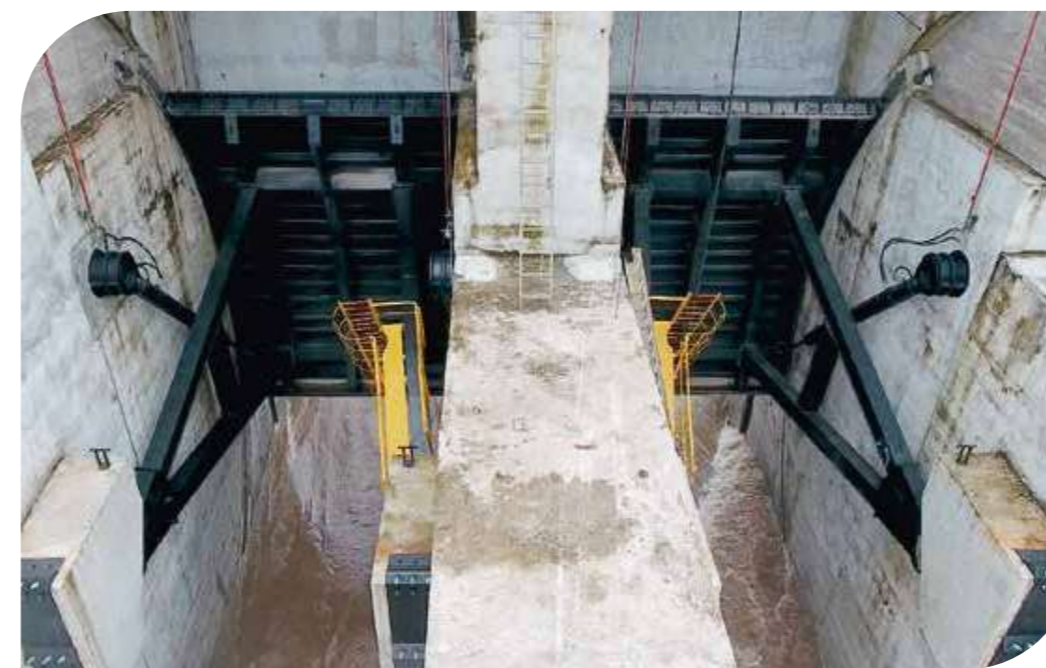
● HIDROELECTRIC PLANT MANDURIACU Transition and Drain Shielding



● HIDROELECTRIC PLANT PUCARÁ Watertight Gates



● HIDROELECTRIC PLANT MANDURIACU Suction Elbows



● HIDROELECTRIC PLANT HIDROALTO Radial Gates



● HIDROELECTRIC PLANT HIDROSIERRA Machines House and Pipes

Electromechanical Installations:



- **MAQUITA CUSHUNCHIC BUILDING**
Electric and Electrical Infrastructure

- **ELECTRIC AND ELECTRONIC LABORATORIES BUILDING ESPE LATACUNGA**
Electric and Electrical Infrastructure

The logo for SEDEMI, consisting of the letters 'SEDEMI' in a bold, white, sans-serif font, positioned in the upper right corner of the page. The background of the entire page is a photograph of a high-voltage power line tower under construction or maintenance, with silhouettes of workers on the structure. The scene is set against a dramatic sky with soft, golden light from a low sun, creating a silhouette effect on the tower and workers. A large, solid red diagonal shape cuts across the right side of the image, serving as a design element.

SEDEMI

PROJECTS
IN PERÚ

- Engineering, Procurement and Construction for the Tower Maintenance T133-L/T 500 kV.

Client: Atlántica Yield
Location: Acari - Perú

Project Scope: Engineering, procurement and construction for the replacement of uprights, profiles, reinforcement of civil works and passage of the conductor of the tower T133 of the LT 500 kv.



● Construction of the Campas – Yaros Transmission Line. Part S5 - 500 kV.

Client: EDEMSA – ISA PDI
Location: Perú

Project Scope: Construction of civil works, access roads, electromechanical assembly and laying of the 500 kV Campas – Yaros Transmission Line.



● Assembly of Emergency Towers La Virgen 138 kV Transmission Line. - Perú

Client: Empresa La Virgen

Location: Chanchamayo - Perú

Project Scope: Assembly of structures for emergency towers and passage of RC 733 conductors, which includes the dismantling and relocation of the 22-meter tower of the 138 kV Transmission Line. La Virgen Substation - Caripa Substation.



● Electromechanical Strengthening La Virgen 138 kV Transmission Line. - Perú

Client: Empresa La Virgen

Location: Chanchamayo - Perú

Project Scope: Reinforcement of foundations, structures and electromechanical assembly of the 138 kV transmission line.



- La Virgen Hydroelectric Plant- Perú

Client: Empresa La Virgen
Location: San Ramón - Perú

Project Scope: Supply, manufacture and assembly of metal structures for La Virgen Hydroelectric Power Plant.



● Chaglla Hydroelectric Power Plant Exit Gates - Perú

Client: Chaglla Hydroelectric Power Plant
Location: Huánuco - Perú

Project Scope: Supply, manufacture, transport and assembly of the metallic structure for exit gates for the power house.



● Chaglla Hydroelectric Power Plant House of Valves - Perú

Client: Chaglla Hydroelectric Power Plant
Location: Huánuco - Perú

Project Scope: Supply, manufacture and assembly of metallic structure for the house of valves.



● Chaglla Hydroelectric Power Plant PCH - Perú

Client: Chaglla Hydroelectric Power Plant
Location: Huánuco - Perú

Project Scope: Supply, manufacture and assembly of the metallic structure for the hydroelectric plant.



CONTACT INFORMATION

ECUADOR

Quito

Vía Sangolquí - Amaguaña Km 4.5

Lotización

El Carmen. Lote # 4.

PHONE: (593 2) 2093 992

MOBILE: (593 9) 9966 4501

(593 9) 9944 5358

(593 9) 9945 1531

Guayaquil

Kennedy Norte, Miguel H. Alcívar y

Eleodoro Arboleda, Edificio Plaza

Center Piso 8, Oficina 807.

MOBILE: (593 9) 8029 8379

(593 9) 9711 1904

PERÚ

Av. Juan de Arona, Edificio

JDA 700, piso 2, oficina 125,

San Isidro, Lima.

MOBILE: (51) 93978 3682

 info@sedemi.com

SEDEMI