

WE BUILD THE CHANGE

**SEDEMI**

Complementary  
Products and Services



## Solutions that inspire trust.

Our integral solutions have no limits. At Sedemi, we have consolidated a wide variety of complementary products and services to cover the needs that arise in infrastructure projects in different sectors.



**Steel Standard  
Products**



**Hot Dip  
Galvanizing**



**Lifting Systems**



**Precision  
Machining**





# Steel Standard Products



**SEDEMI**





## Steel Standard Products:

The versatility of our production allows us to design and manufacture steel standard products tailored to the specific needs of each client.



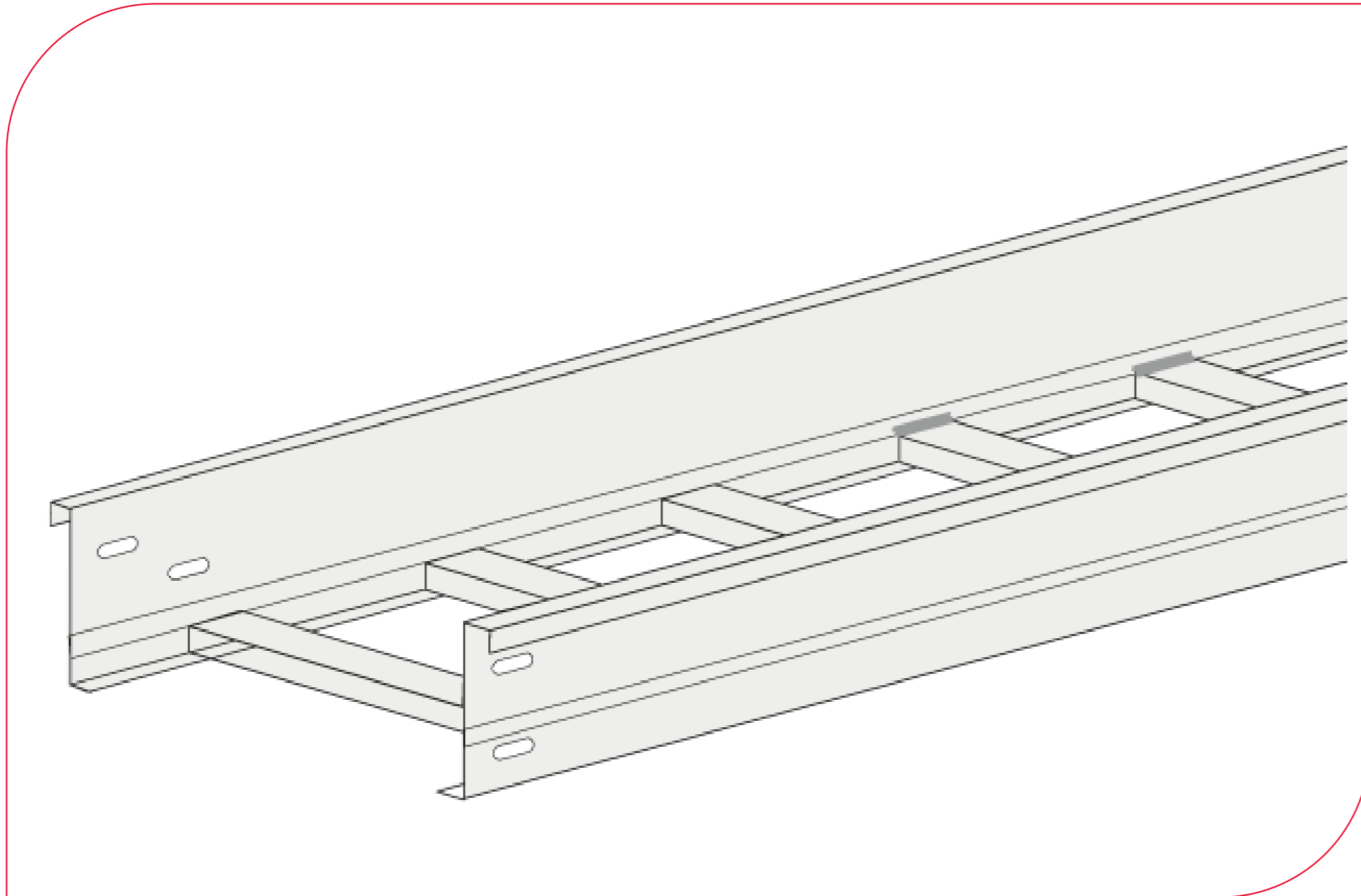
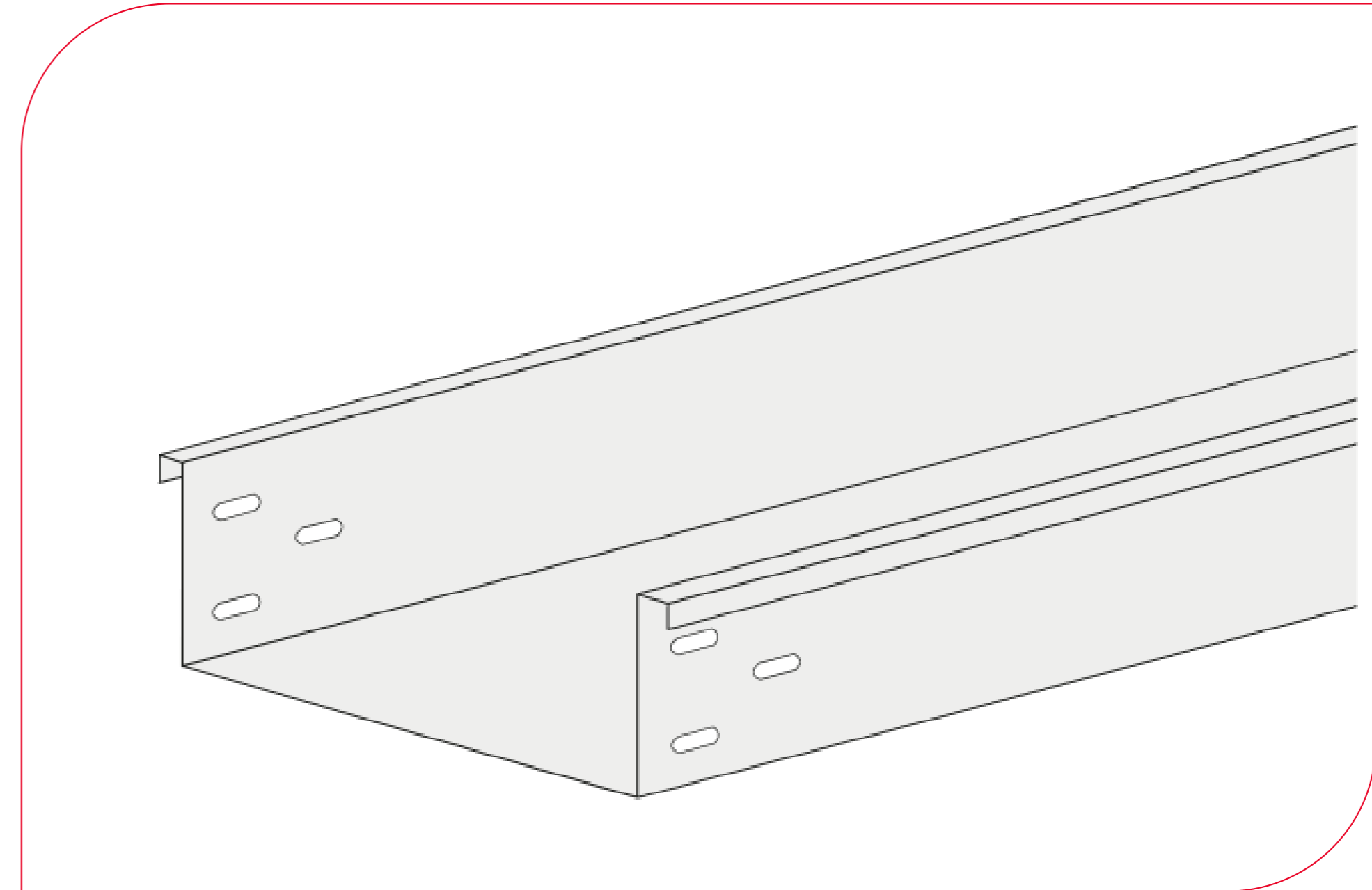
# Cable Trays:

SEDEMI Cable Trays are manufactured under international standards that allow us to offer the best technical and economic solution for any type of application. We have trays manufactured in:

- Aluminum
  - Light-weight
  - Heavy-weight
- Pre galvanized
- Hot dip galvanized
- Stainless
- Galvanized + oven baked paint (duplex)

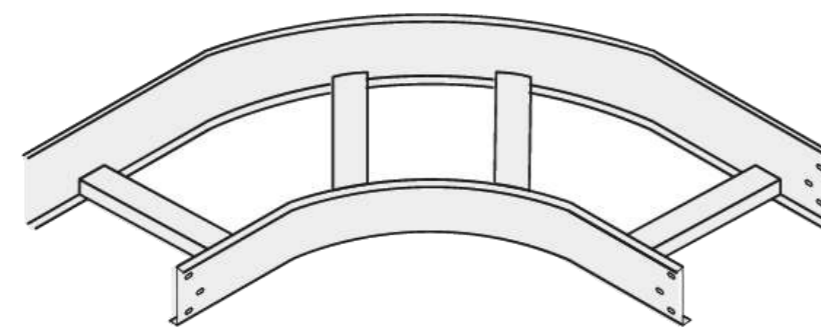


- Type of Cable Trays

**LADDER TYPE****DUCT TYPE**

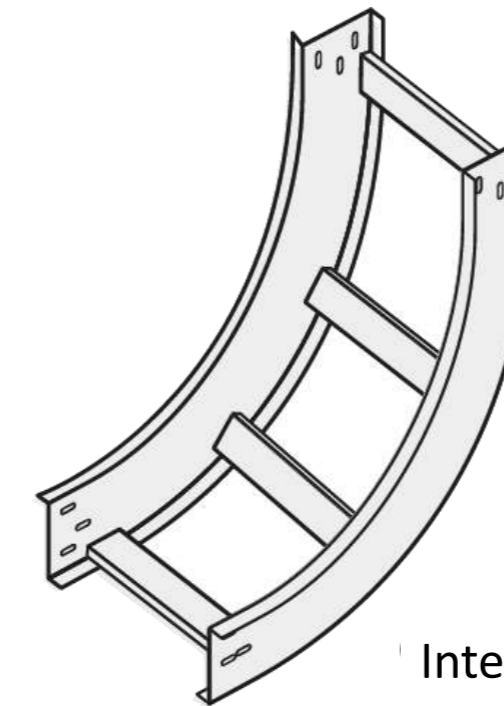
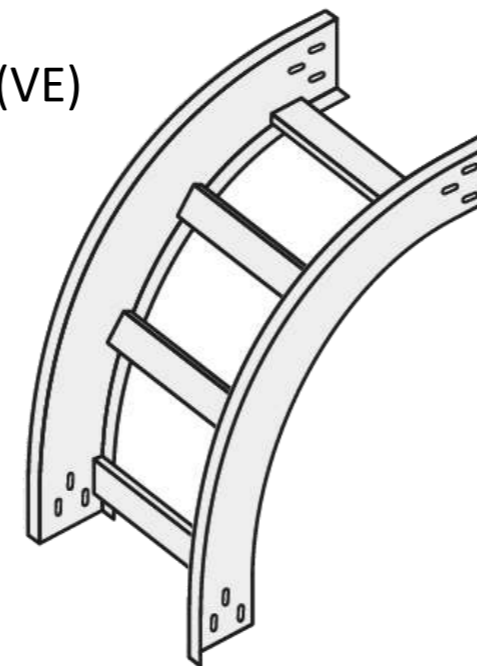
- Accessories and Complements:

Accessories:

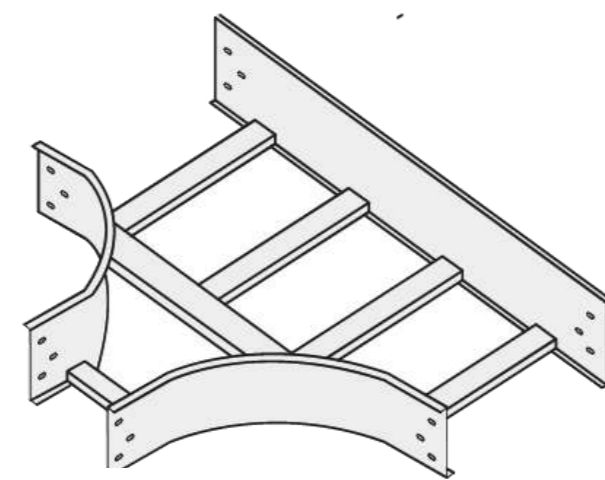


Horizontal Curve (H)

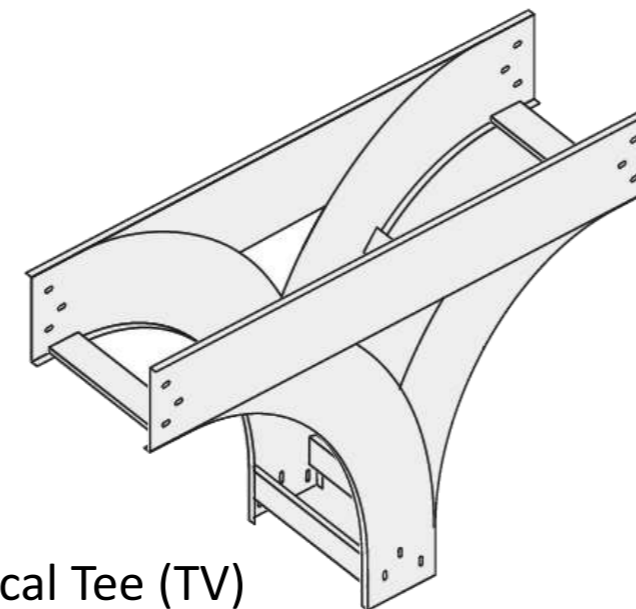
External Vertical Curve (VE)



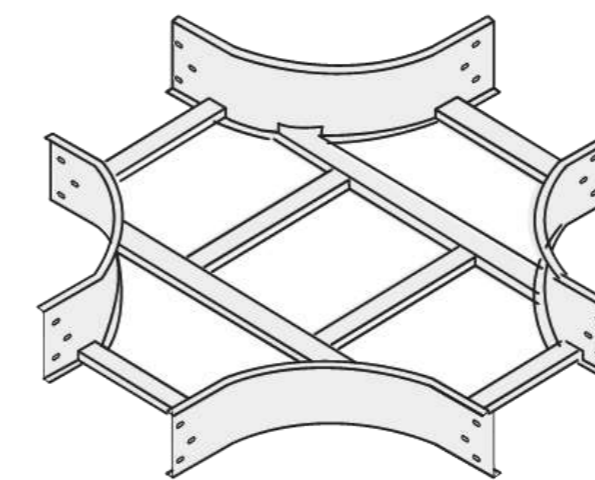
Internal Vertical Curve (VI)



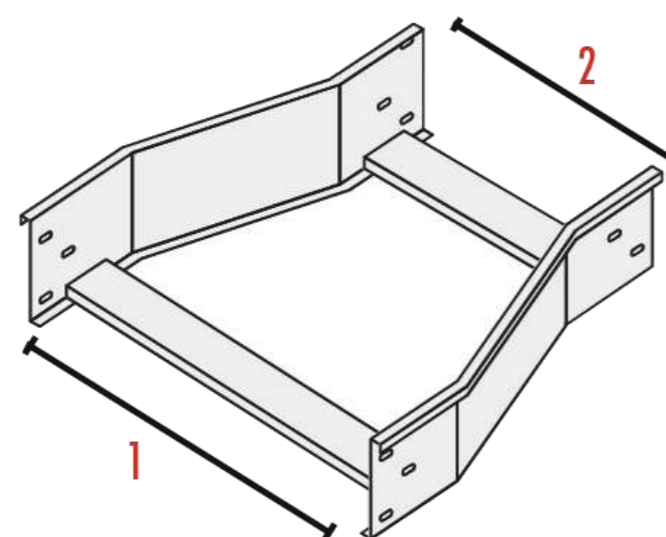
Horizontal Tee (TH)



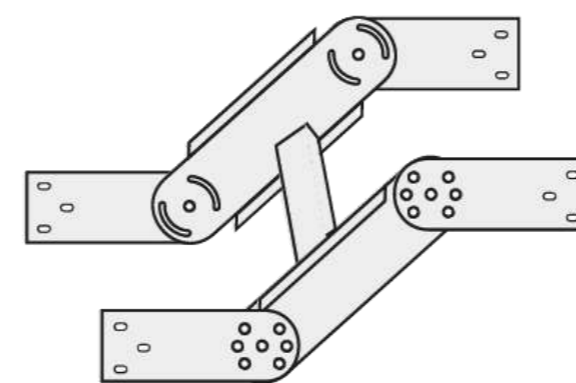
Vertical Tee (TV)



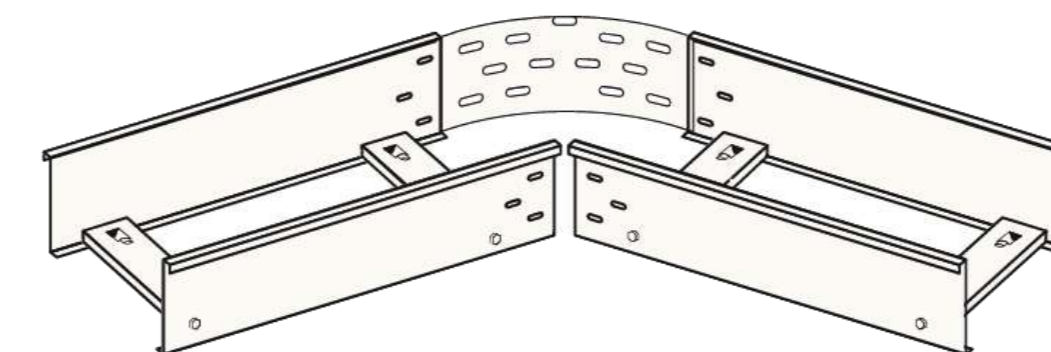
Horizontal Cross (XH)



Symmetric Reduction (RS)



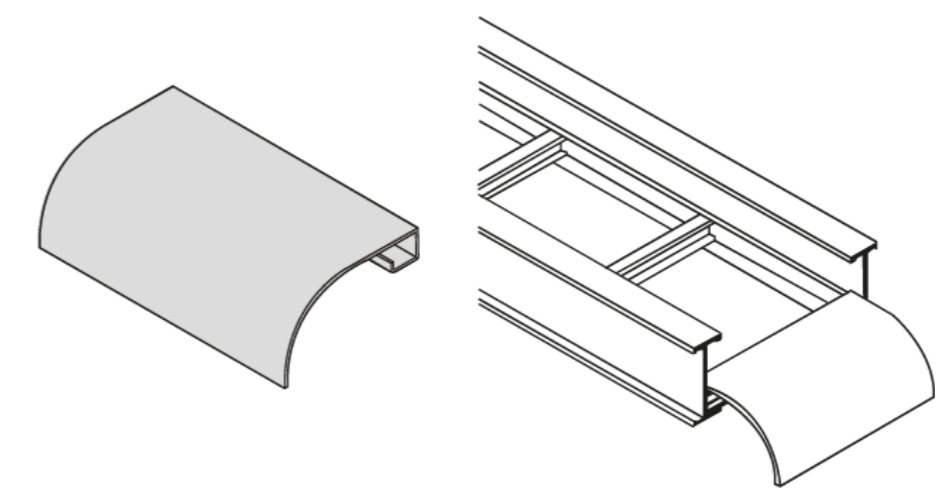
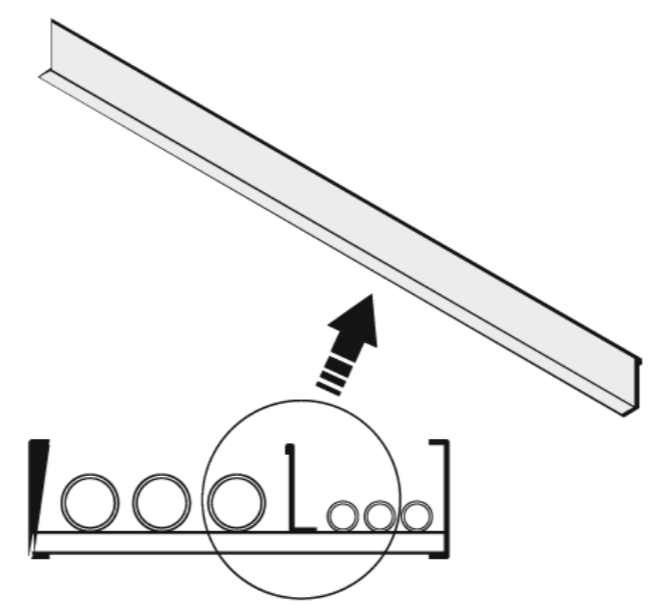
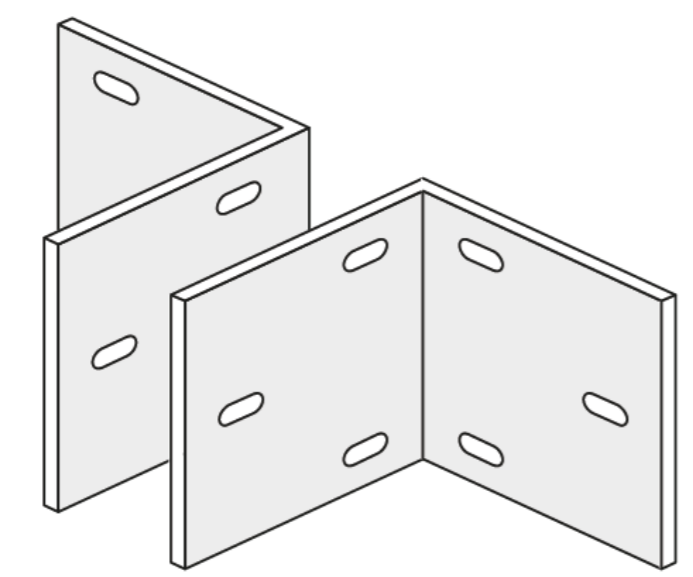
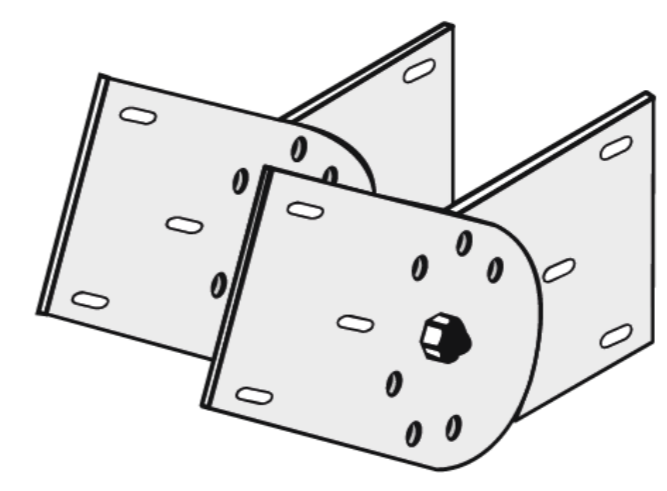
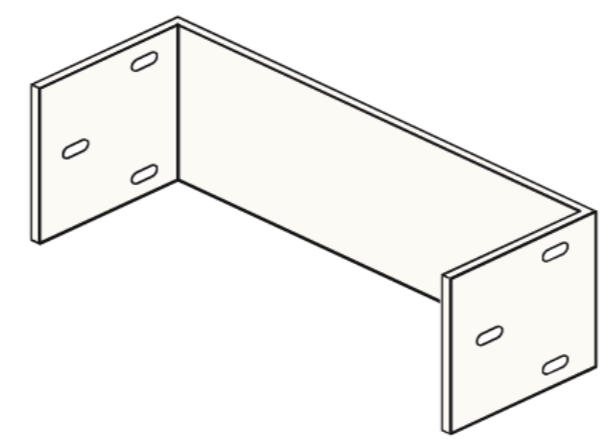
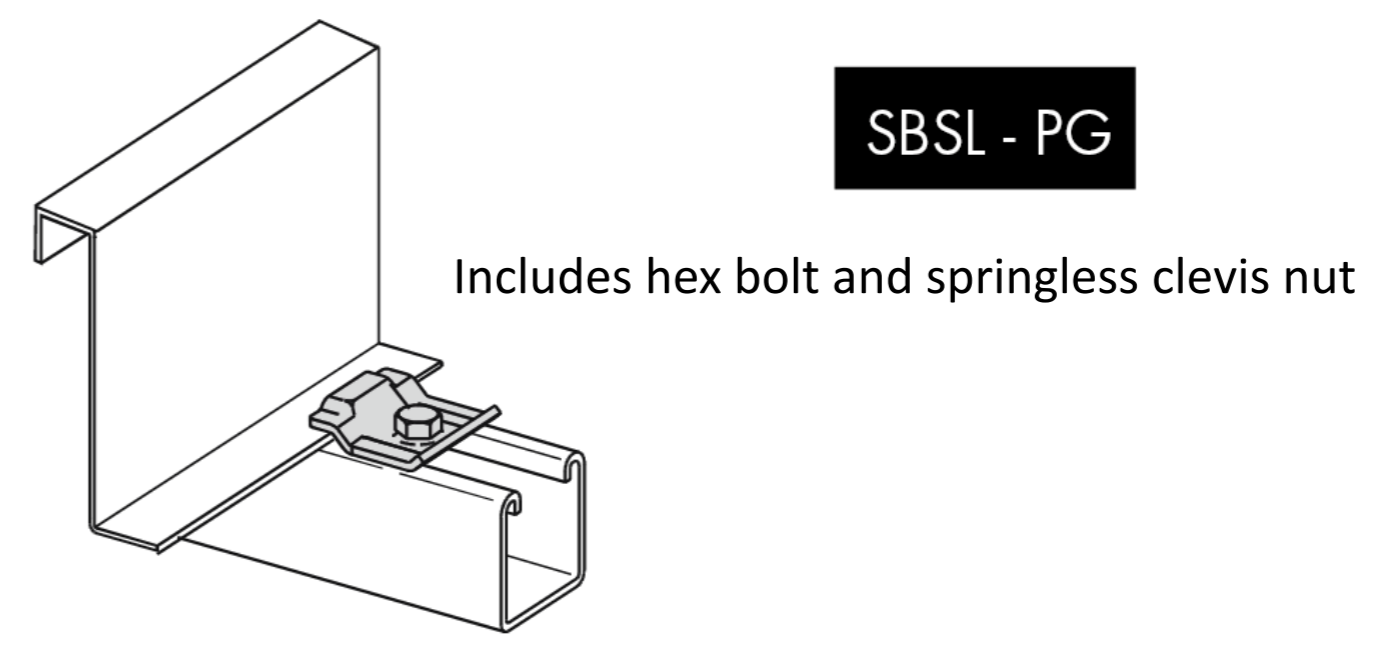
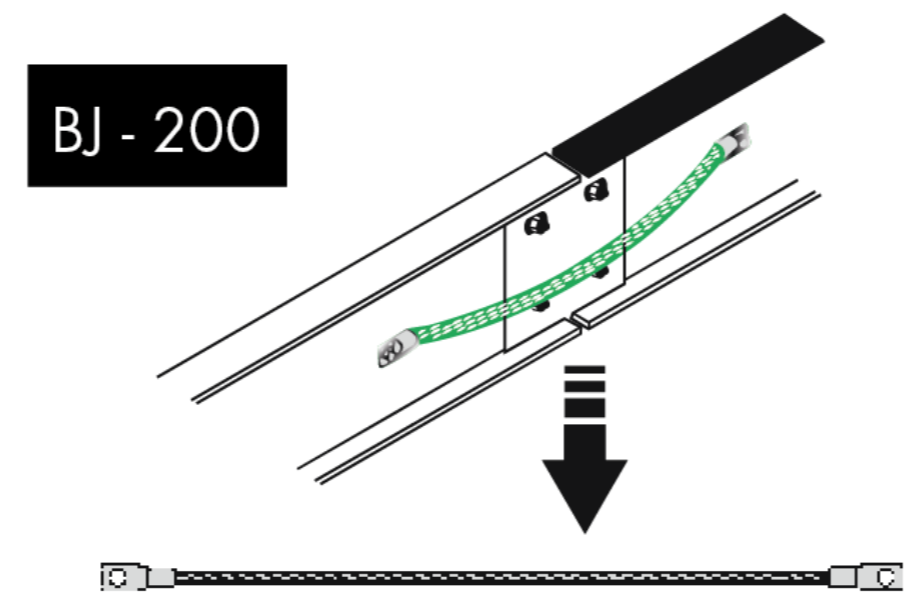
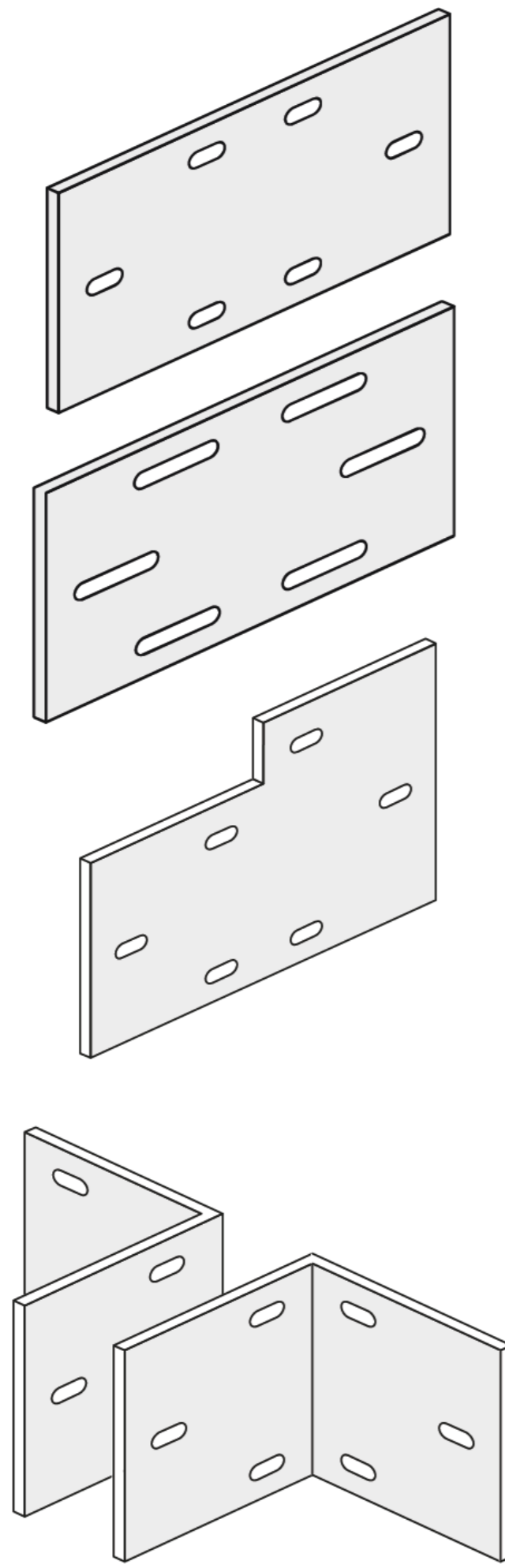
Adjustable Vertical Curve (VA)



Adjustable Horizontal Curve (HA)

- Accessories and Complements:

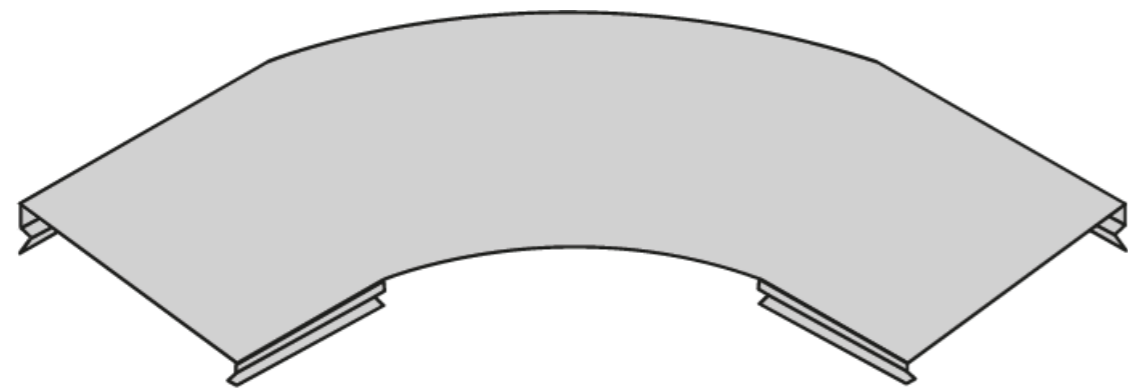
Union Accessories



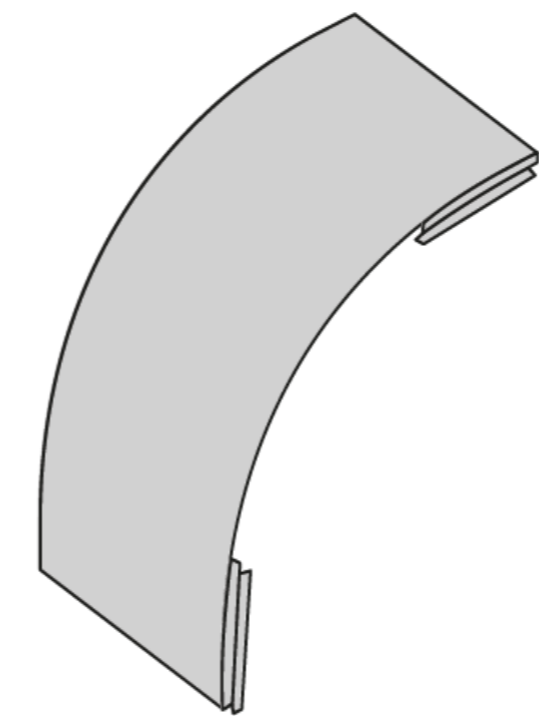


- Accessories and Complements

Caps

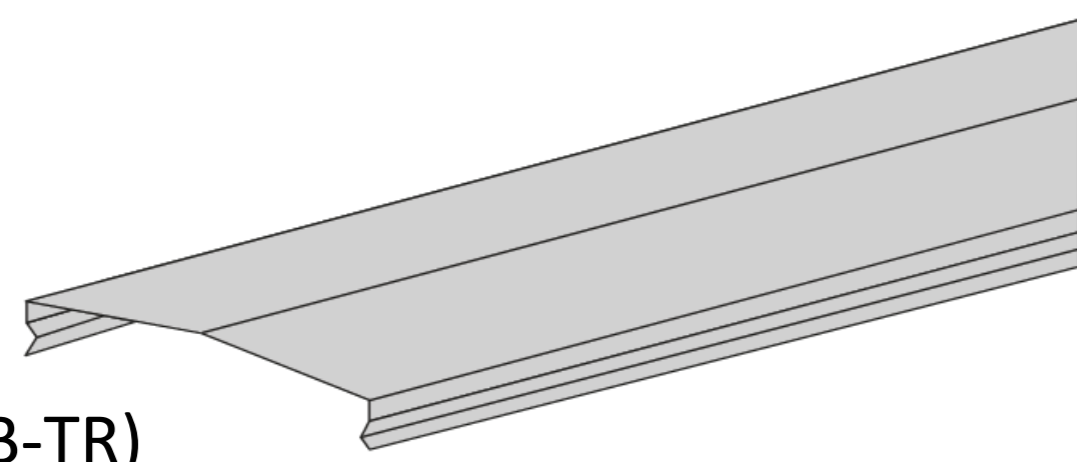
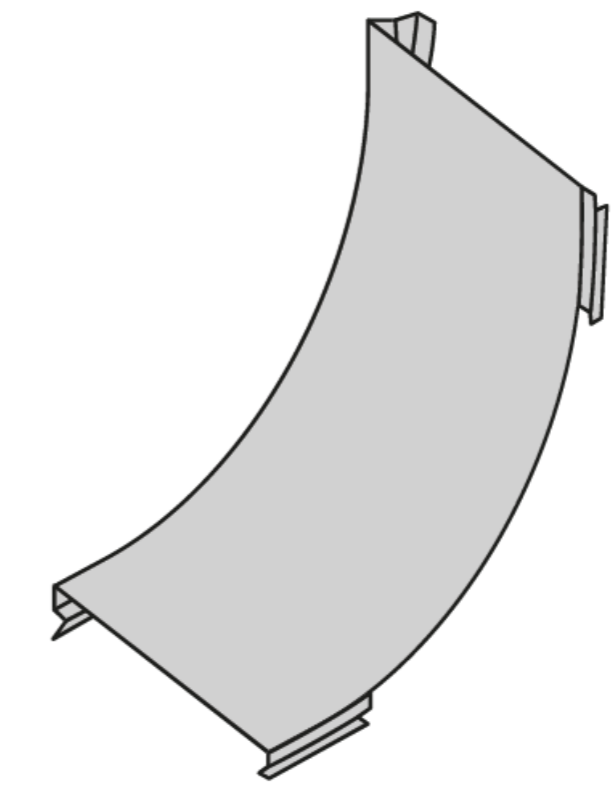


Horizontal Curve (TB-H)

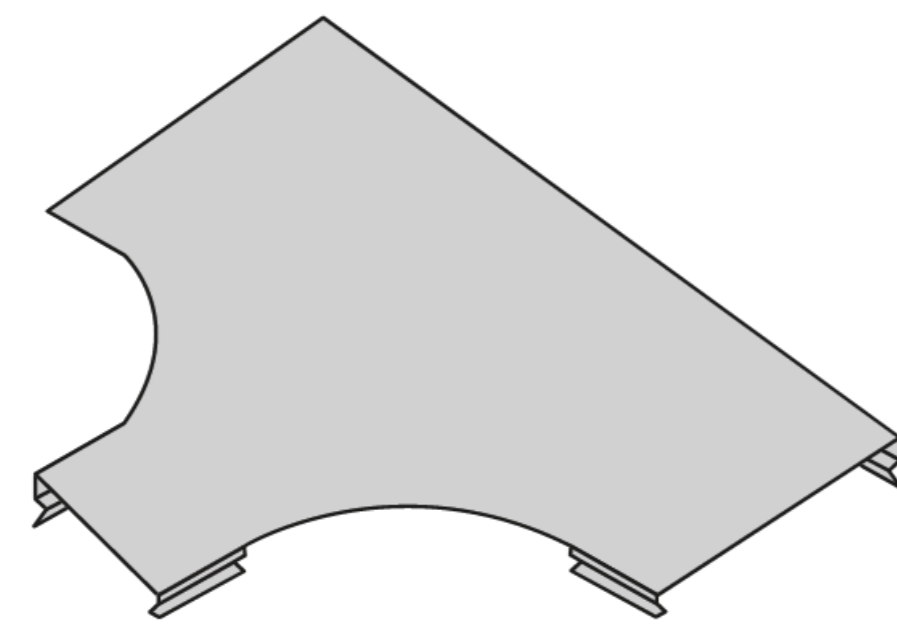


External Vertical Curve (TB-VE)

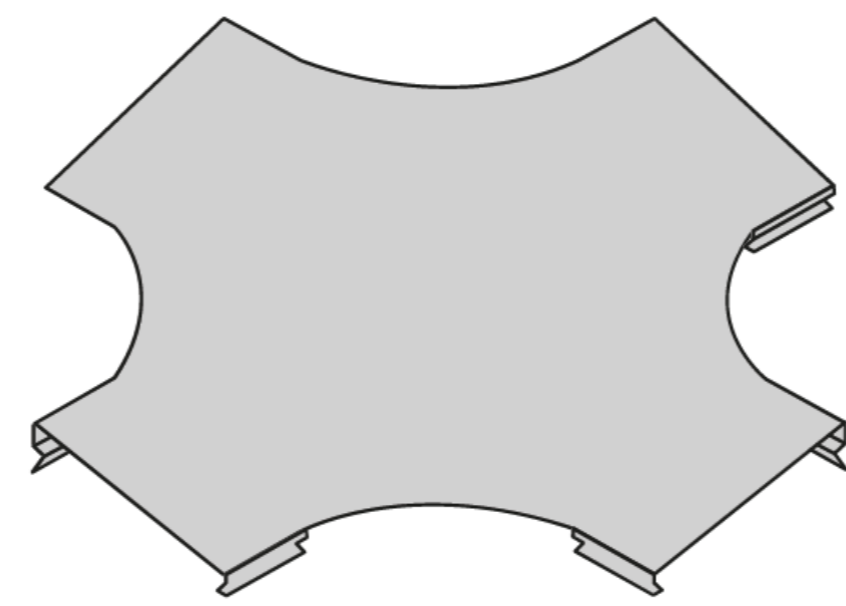
Internal Vertical Curve (TB-VI)



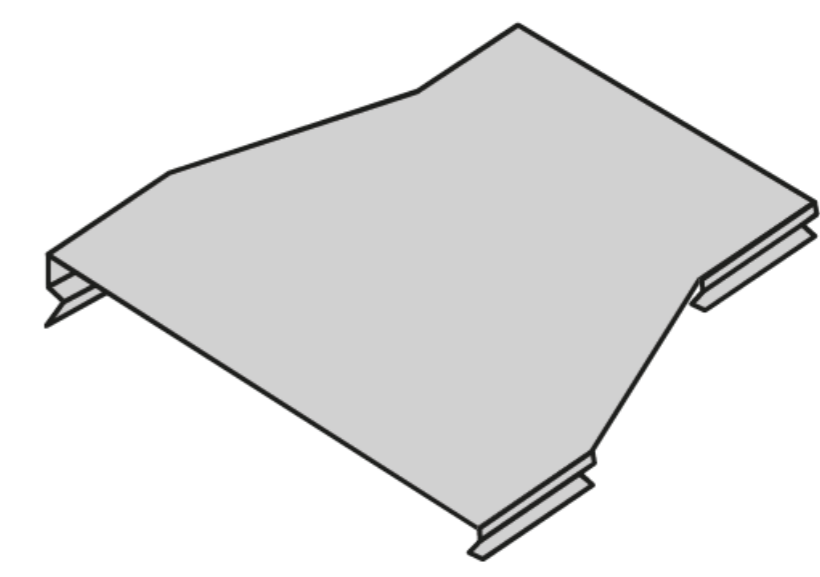
Straight Stretch (TB-TR)



Horizontal Tee (TB-TH)



Horizontal Cross (TB-XH)



Symmetrical Reduction (TB-RS)



- Selection of Cable Trays:

**ALUMINUM**

Used in any type of environment (Except in acid exposure industries).

**PRE  
GALVANIZED**

Indoor use.

**GALVANIZED  
OVEN PAINTED**

Indoor and outdoor use.

**STAINLESS  
STEEL**

For outdoor and indoor applications. Used in the food industry, hospital surgical rooms and highly corrosive environments with presence of controlled acids.

**HOT  
GALVANIZED  
STEEL**

For outdoor installations.



- Selection of Cable Trays:

Installation Place	Environment	Application	Aluminum	STEEL			
				Hot dip galvanizing	Pre Galvanized	Stainless	Zn + Oven painted
<b>Indoor</b>	Dry	Buildings, offices, shopping centers, hospitals, residential, covered parking.	R	NR	R	NR	R
<b>Indoor Industrial</b>	Dry	Industrial plants.	R	NR	R	NR	R
<b>Indoor Industrial</b>	Wet	Industrial plants.	R	R	NR	NR	R
<b>Indoor Industrial</b>	Dry/Wet	Food industry, Surgical rooms in hospitals.	NR	NR	NR	R	NR
<b>Outdoor</b>	Wet	Any Application.	R	R	NR	NR	R
<b>Outdoor</b>	Saline/Humid	Any Application.	R	NR	NR	NR	NR

**R: Recommended**

**NR: Not Recommended**



- Projects:



- Repowering of the Esmeraldas Refinery – 15,000 m of trays and 100 TON of tray racks and frames.



- Cuenca Tram Substation. 100m of galvanized trays.



- FV Área Andina Plant  
600 m of aluminum trays.



- Coca Airport  
500 m of pregalvanized trays.



- Chorrillos Monte Verde  
8.500 m of heavy aluminum trays and tray rack structures.



- ESPE Investigation Center  
3.500 m of light aluminum trays.



- El Inga Substation  
1.200 m of galvanized trays.



- Novopan Industrial Plant Repowering  
2.500 m of pregalvanized trays.



# Structural Support:

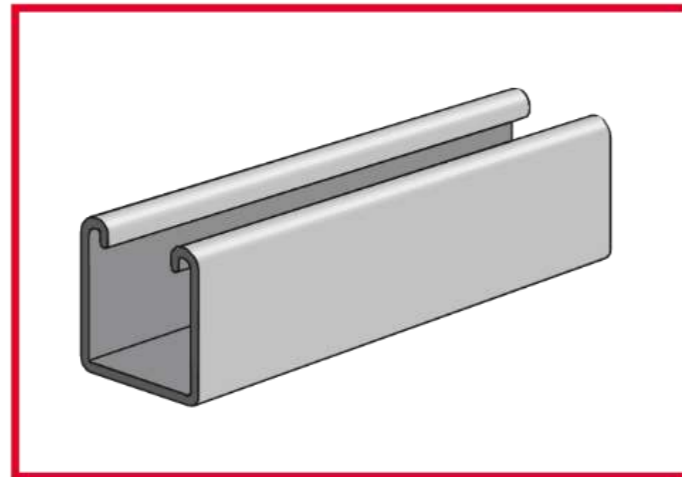
We manufacture structural support, according to the needs and characteristics of each client:

- Smooth channels.
- Die-cut channels.
- Threaded rod.
- U bolt.
- Other anchors.

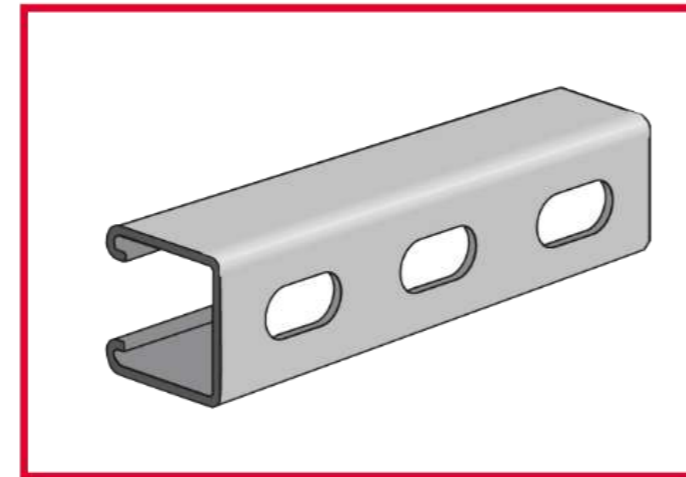


- Structural Support

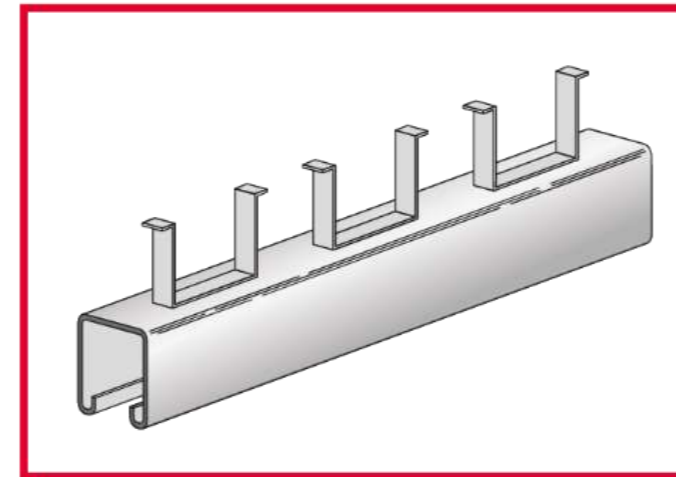
Smooth structural channel



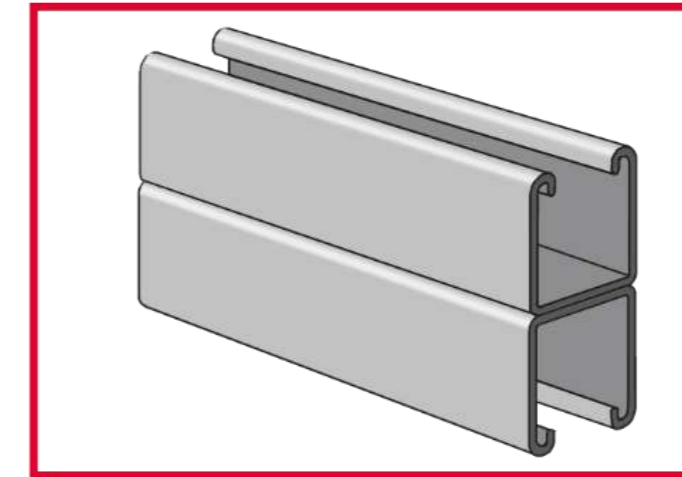
Die-cut structural channel



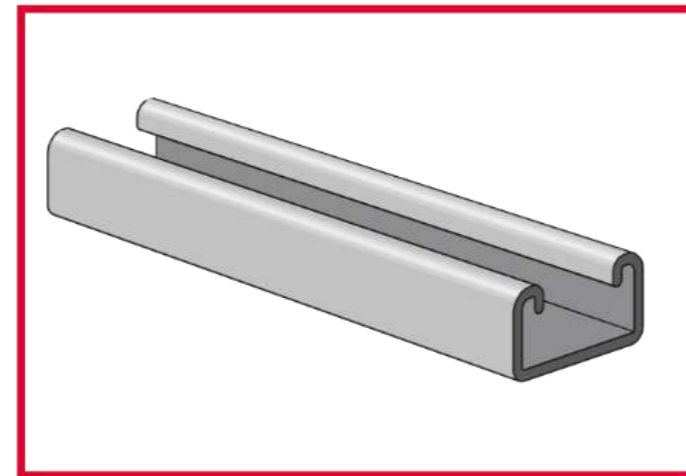
Anchor channel



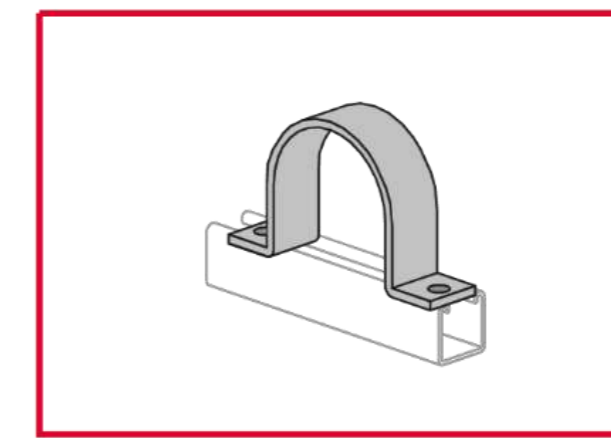
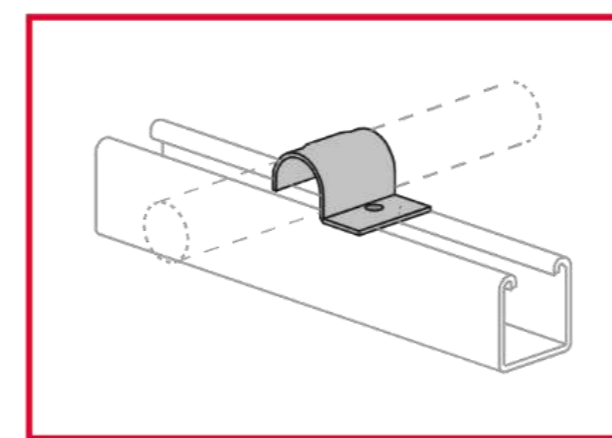
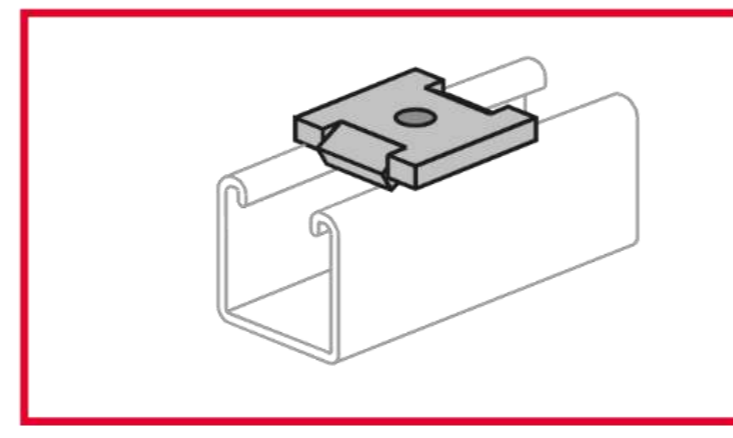
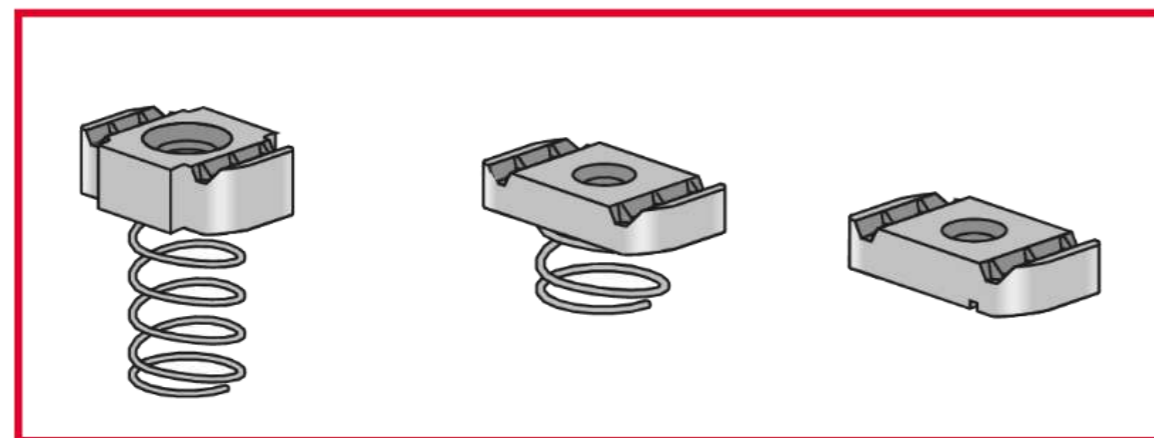
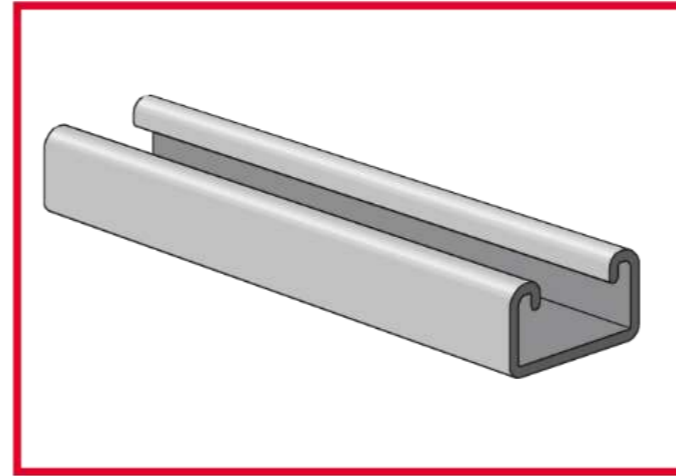
Double structural channel



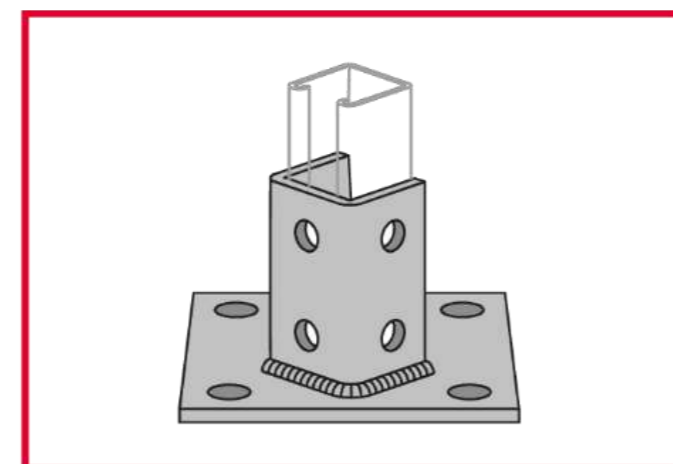
Smooth low structural channel



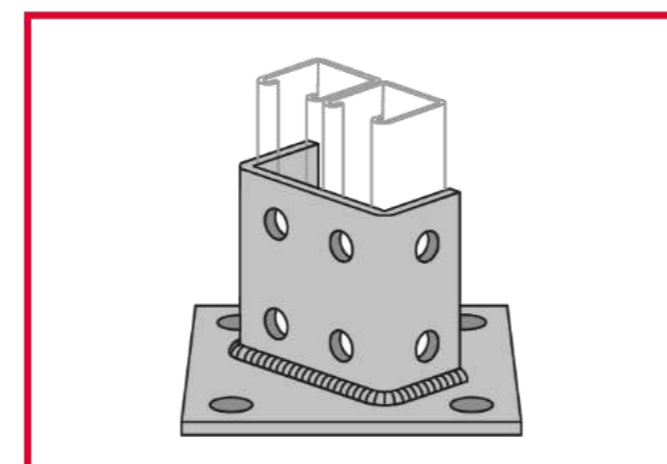
Low structural die-cut



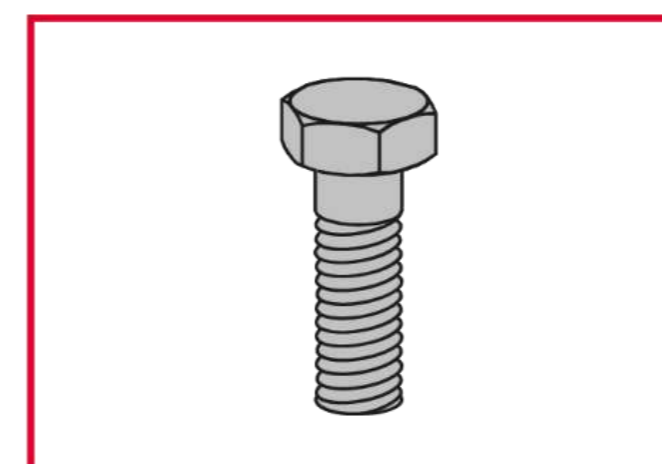
Post base for single channel



Post base for double channel



Electrolytic galvanized hex bolt





# Grating Industrial Flooring

**SEDEMI**

- All the products in the “industrial flooring” line are made of steel and are treated with a hot-dip galvanized coating process, which ensures the durability, cleanliness and integrity of the product.
- The ideal solution for floors, walkways or bridges.
- They provide strength, safety, easy installation, light, ventilation, aesthetic design, hygiene and durability.



- Grating Industrial Flooring- Measurements:

- Plank:

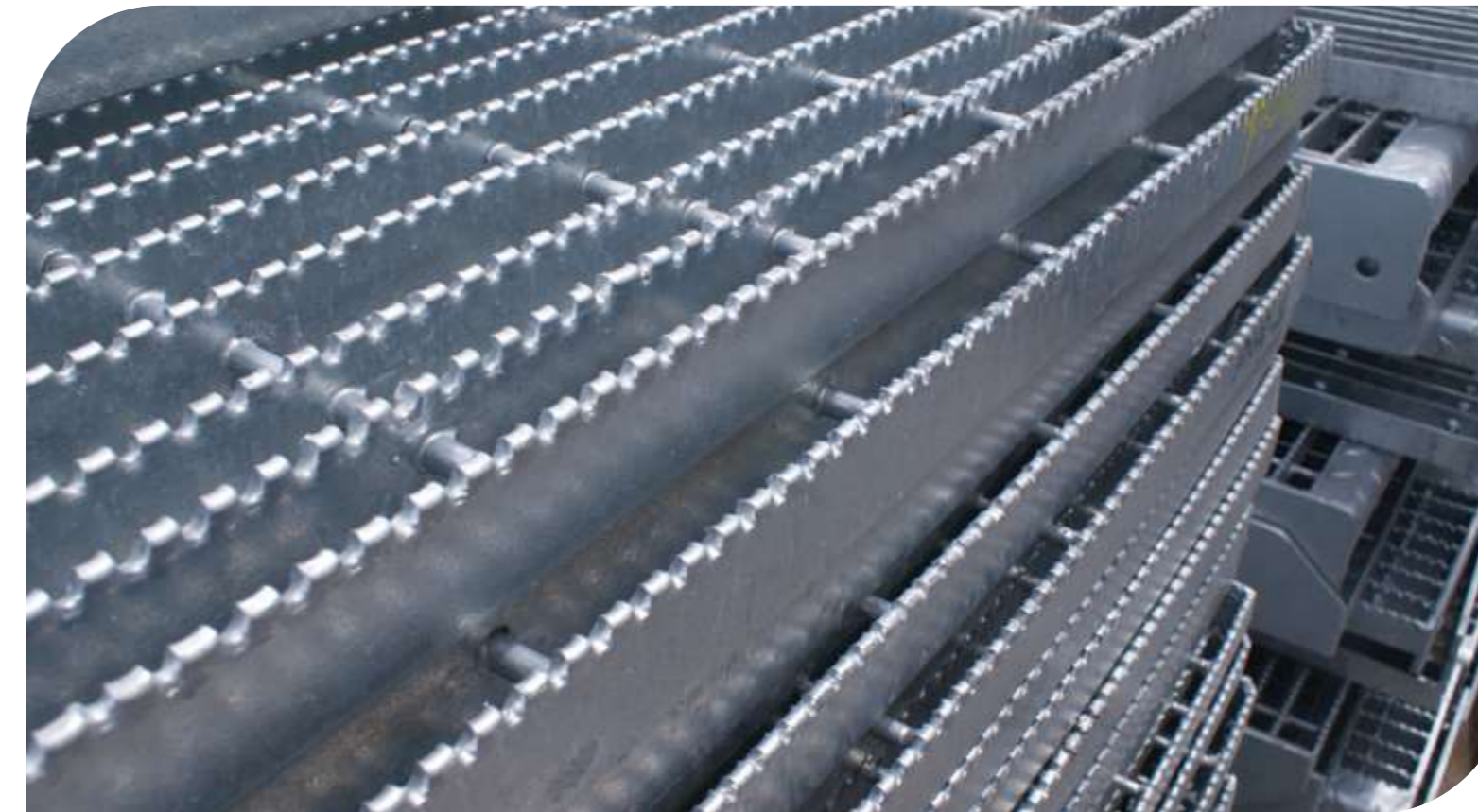
- 6.000 mm x 1000 mm
- 3000 mm x 1000 mm
- 2400 mm x 1200 mm

- Steps:

- 300 mm x 800 mm
- 300 mm x 1000 mm
- 300 mm x 1.200 mm

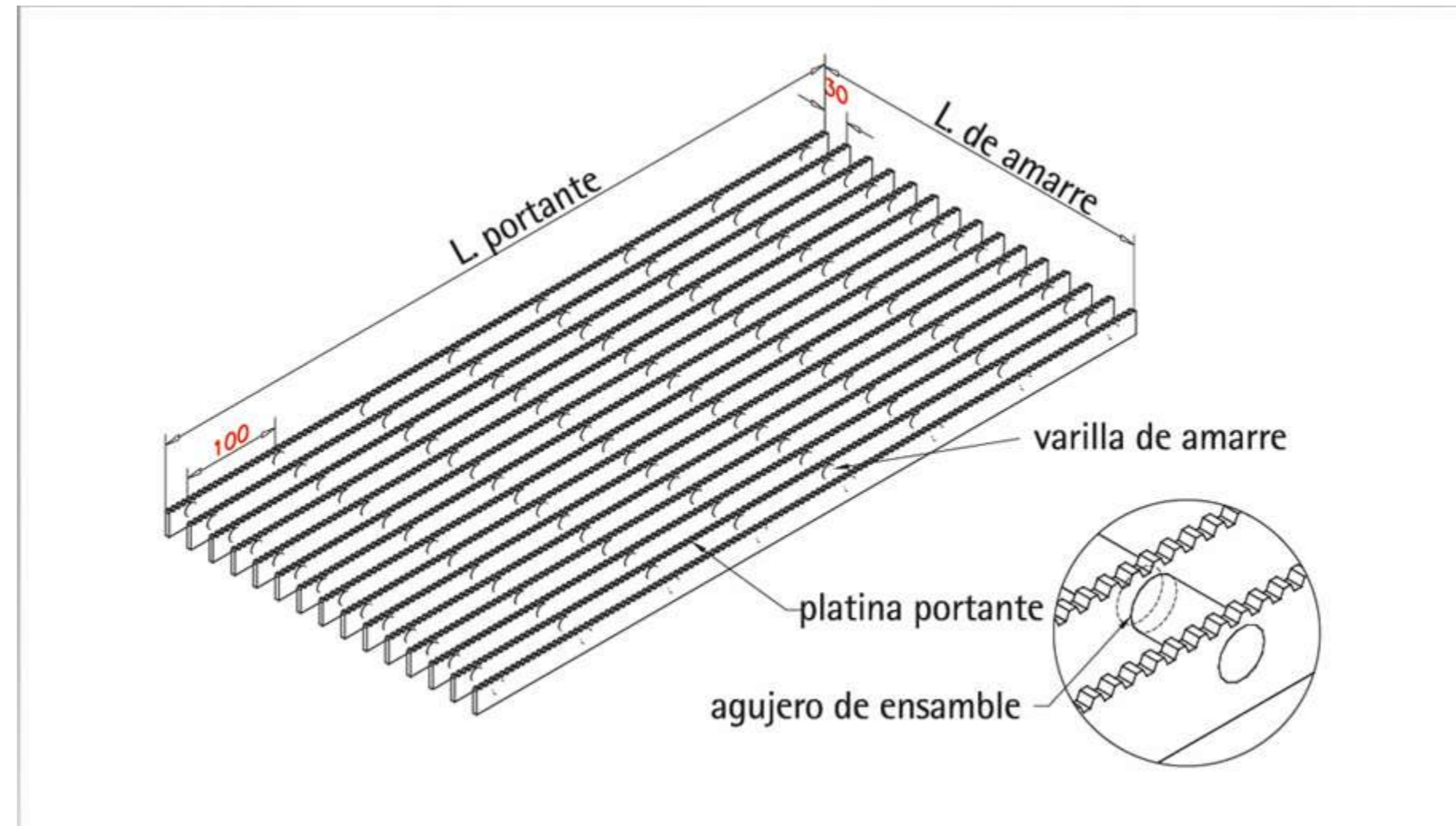
- Cellar plank:

- 6000 mm x 1042 mm

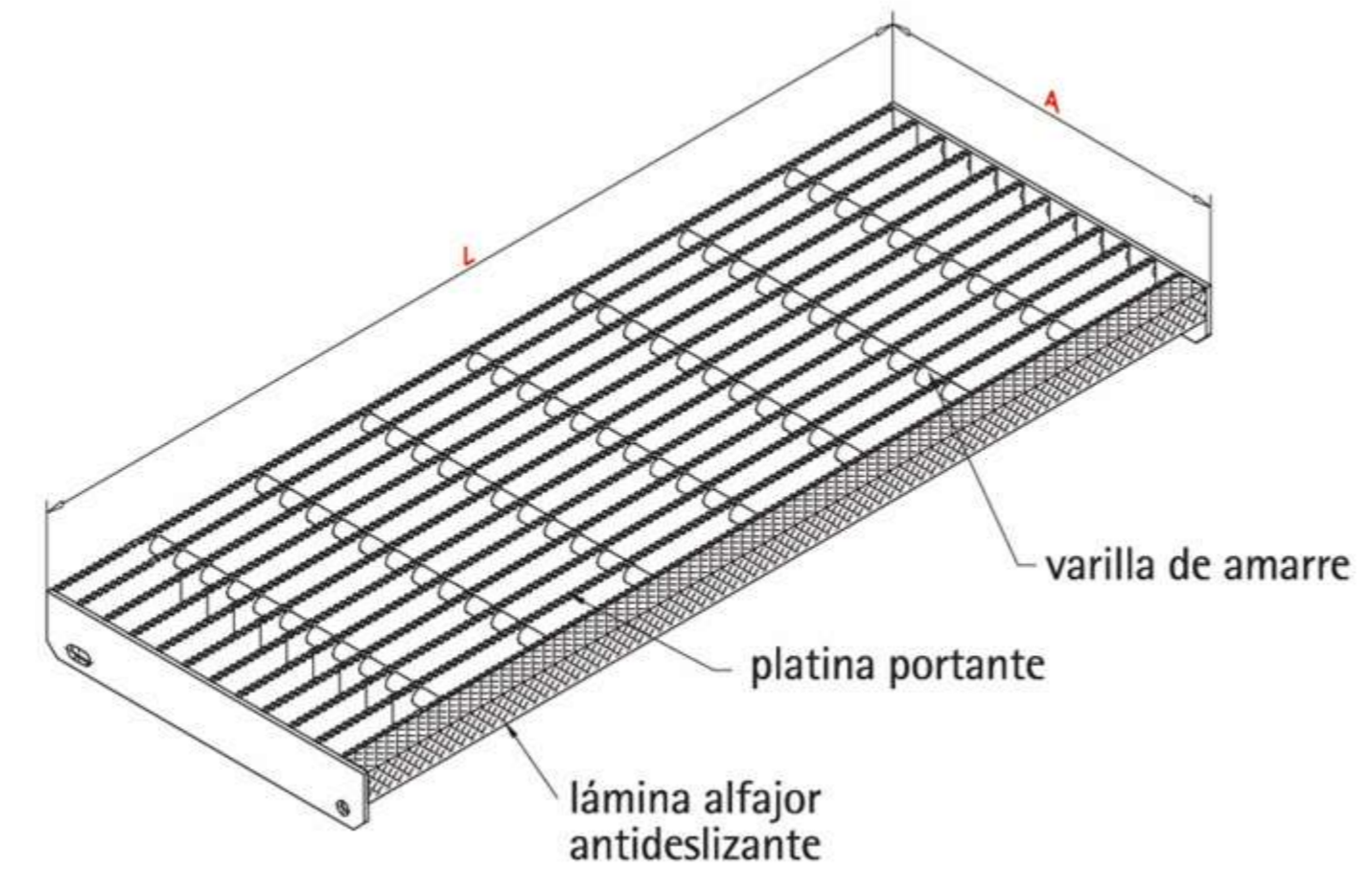




- Types:



“S” Type Toothed Grid



“S” Type Rung

Note: They are also manufactured with non-toothed plates



## Poles:

We are specialists in the manufacture of metal poles for public lighting, parking lots, sports fields, residential complex, parks and camps.

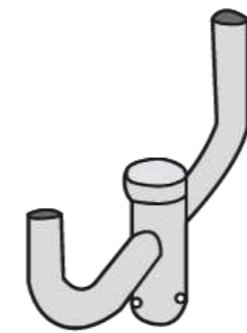
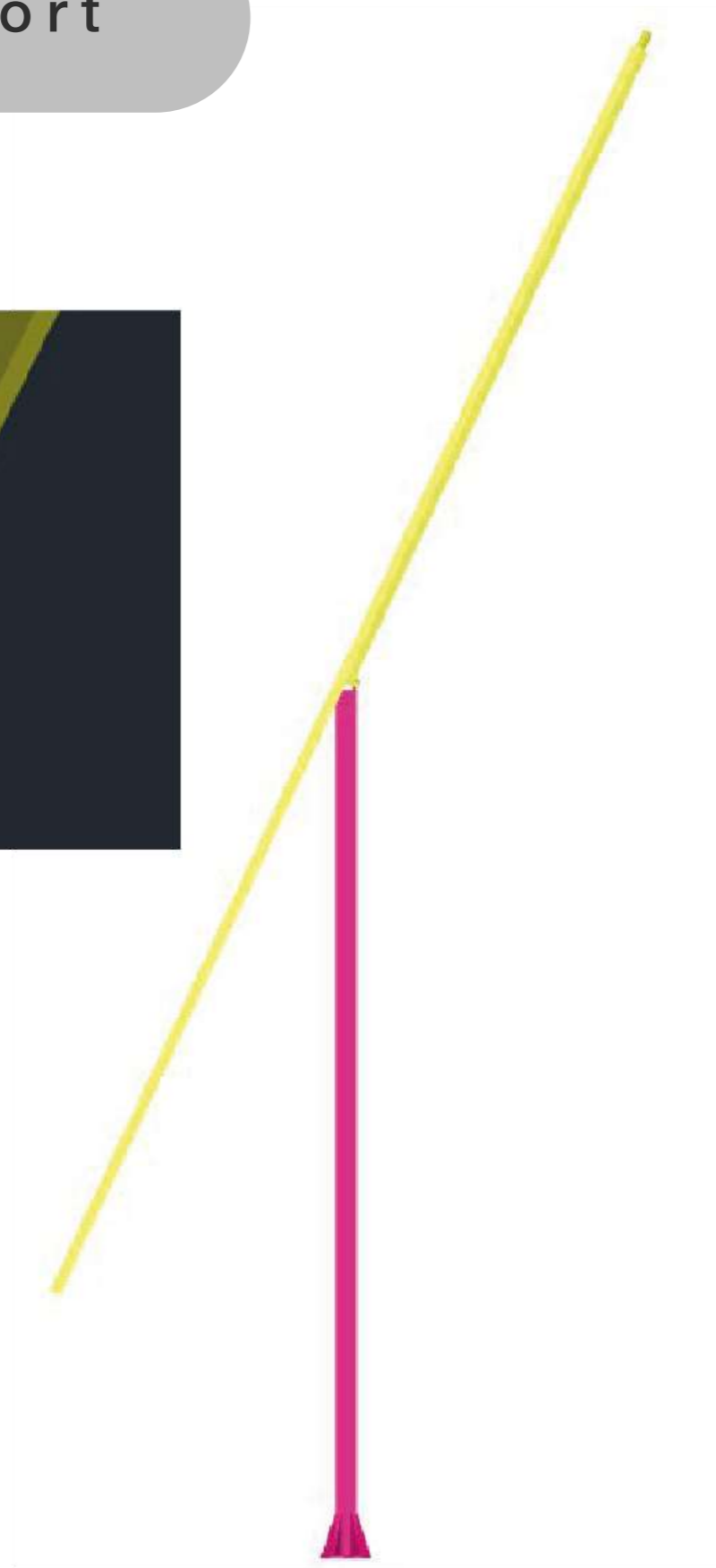
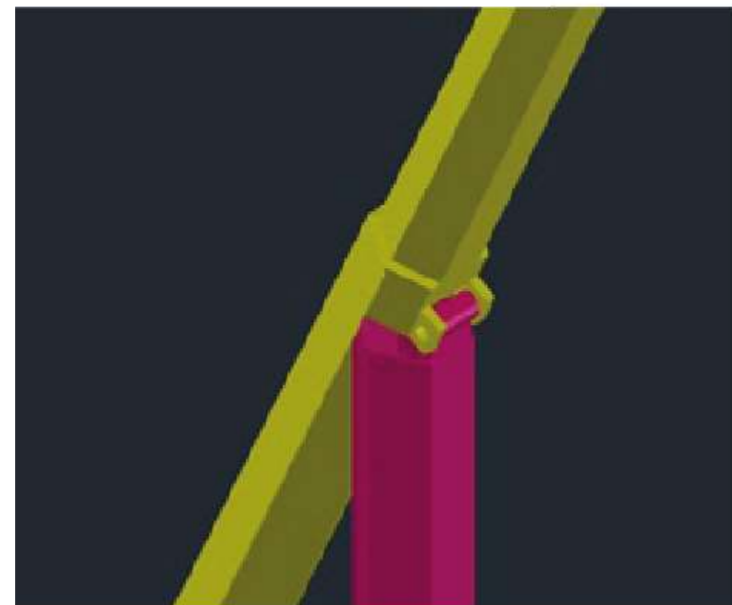
- Folding
- Telescopic
- Conical
- Ornamental



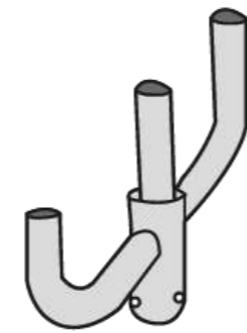


- Accessories:

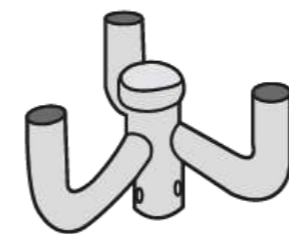
Light Support



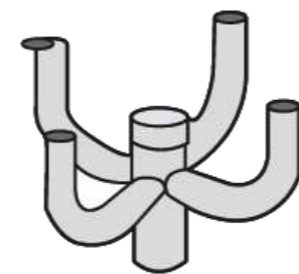
**CODE**  
SL – 2-180-GC



**CODE**  
SL – 3-180-GC

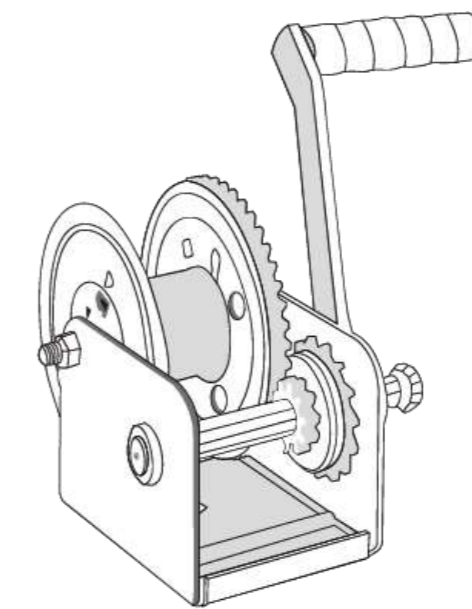


**CODE**  
SL – 3-120-GC



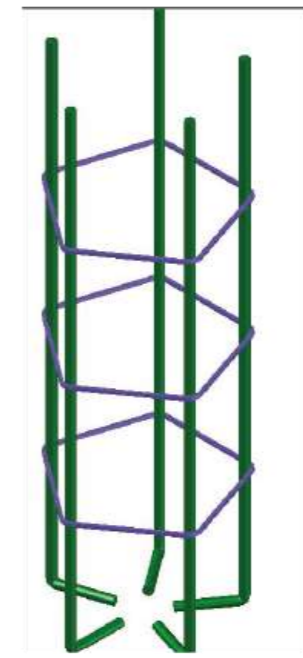
**CODE**  
SL – 4-90-GC

Lifting Winch



**CODE**  
WE - PA

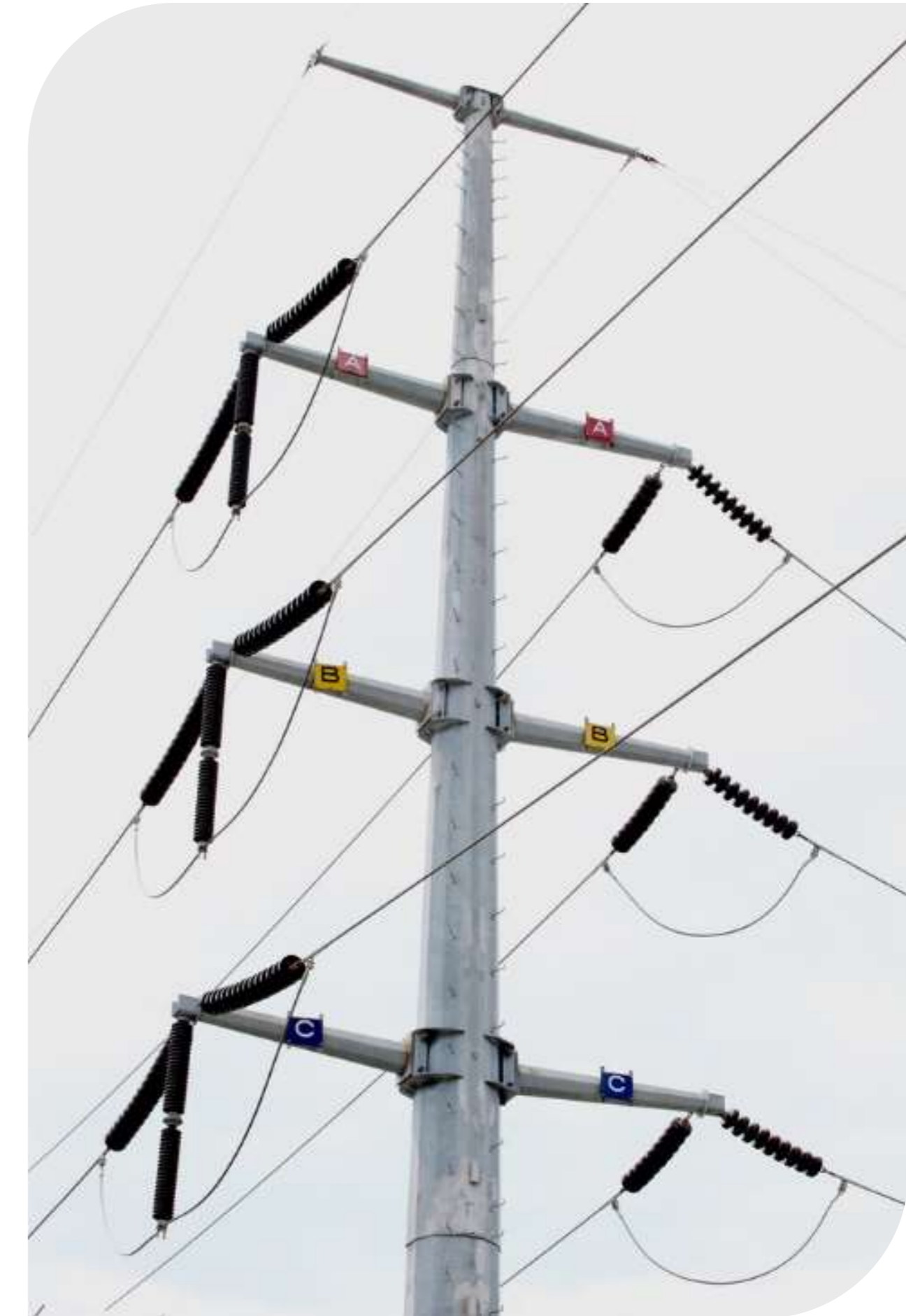
Anchor Basket



CODE	POLE HEIGHT
CAPA – GC	9 AND 11
CAPA – 6 – GC	6



- Poles:





## Enclosures:

A unique enclosure system that has:

- High security.
- Ease of installation.
- High durability.
- Hot dip galvanized protection.
- Ease of transportation.
- Maintenance free.
- Installation speed.

In addition, it is a modular system that adapts to irregularities in the field and at different heights, according to the needs of the project.



## Hot dip galvanizing

At Sedemi, we have a passion for the protection of metallic structures against corrosion, through the hot-dip galvanizing process that extends the durability of the structure.

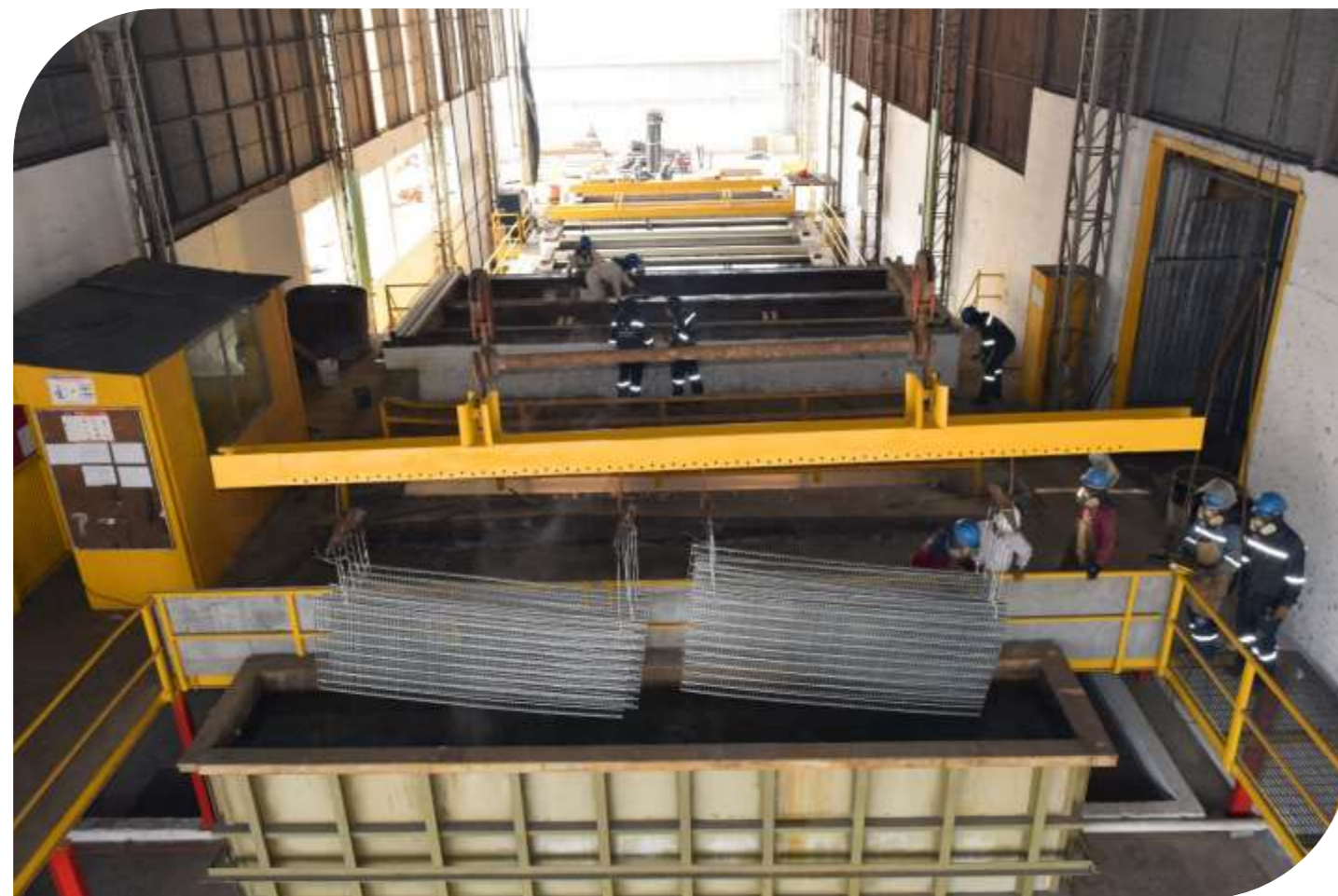
We differentiate ourselves by our reliability and expert advice.





Our robust state-of-the-art plant allows us to have total control of the processes, with an installed capacity of 1,000 tons per month and compliance with ASTM quality standards.

- Simple immersion.
- Double immersion.
- Spin.



1000 ton/month capacity.



Crucible (6,5m. de length x 1,1m. width x 1,80m. depth)



# Lifting Systems Fenix Ing.

Provide lifting solutions and safe cargo handling to contribute to the improvement of industrial processes in Ecuador.



We offer to all areas of the Industry our extensive know-how, covering all processes from planning to installation of hoists and crane bridges, both Standard and ExProof (Ex).



Hoists



Crane bridges



Lifting accessories



Maintenance and advice



Training and certification



## Precision Machining

Tailor-made solutions to optimize the operation of our clients and reduce idle time, manufacturing elements on time and quality according to schedule.



## Industrial Design and Machining Solutions:

We have state-of-the-art technology that simplify the manufacturing processes of mechanical components available to all sectors.

We are a benchmark in carrying out complex high-value and high precision jobs.

Custom parts  
manufacturing.

Parts reconstruction.

Parts manufacturing in  
series.

Industrial knives  
sharpening.

Die-cutting and punching  
molds.





## CONTACT INFORMATION

### ECUADOR

Quito

Vía Sangolquí - Amaguaña Km 4.5

Lotización

El Carmen. Lote # 4.

PHONE: (593 2) 2093 992

MOBILE: (593 9) 9966 4501

(593 9) 9944 5358

(593 9) 9945 1531

### Guayaquil

Kennedy Norte, Miguel H. Alcívar y

Eleodoro Arboleda, Edificio Plaza

Center Piso 8, Oficina 807.

MOBILE: (593 9) 9711 1904

(593 9) 9949 8616

### PERÚ

Av. Juan de Arona, Edificio

JDA 700, piso 2, oficina 125,

San Isidro, Lima.

MOBILE: (51) 93978 3682

info@sedemi.com



# SEDEMI